

# frame planter



Round, square and rectangular planters add colour and greenery to soften urban settings. Available in a range of sizes and heights, with solid, perforated or batted body options.

**Liner included.**

Select one box per category to specify your product.

**CONFIGURATION AND DIMENSION:**

- Rectangular**  
500W x 1000L x 560H (mm)  
19 3/4" W x 39 3/8" L x 22" H
- Square**  
1000W x 1000L x 560H (mm)  
39 3/8" W x 39 3/8" L x 22" H
- Square XL**  
1000W x 1000L x 800H (mm)  
39 3/8" W x 39 3/8" L x 31 1/2" H
- Round**  
Ø500 x 500H (mm)  
Ø19 3/4" x 19 3/4" H
- Round Tall**  
Ø500 x 700H (mm)  
Ø19 3/4" x 27 1/2" H
- Round Large**  
Ø700 x 500H (mm)  
Ø27 1/2" x 19 3/4" H
- Round XL**  
Ø1000 x 800H (mm)  
Ø39 3/8" x 31 1/2" H
- Tailored

**FRAME:**

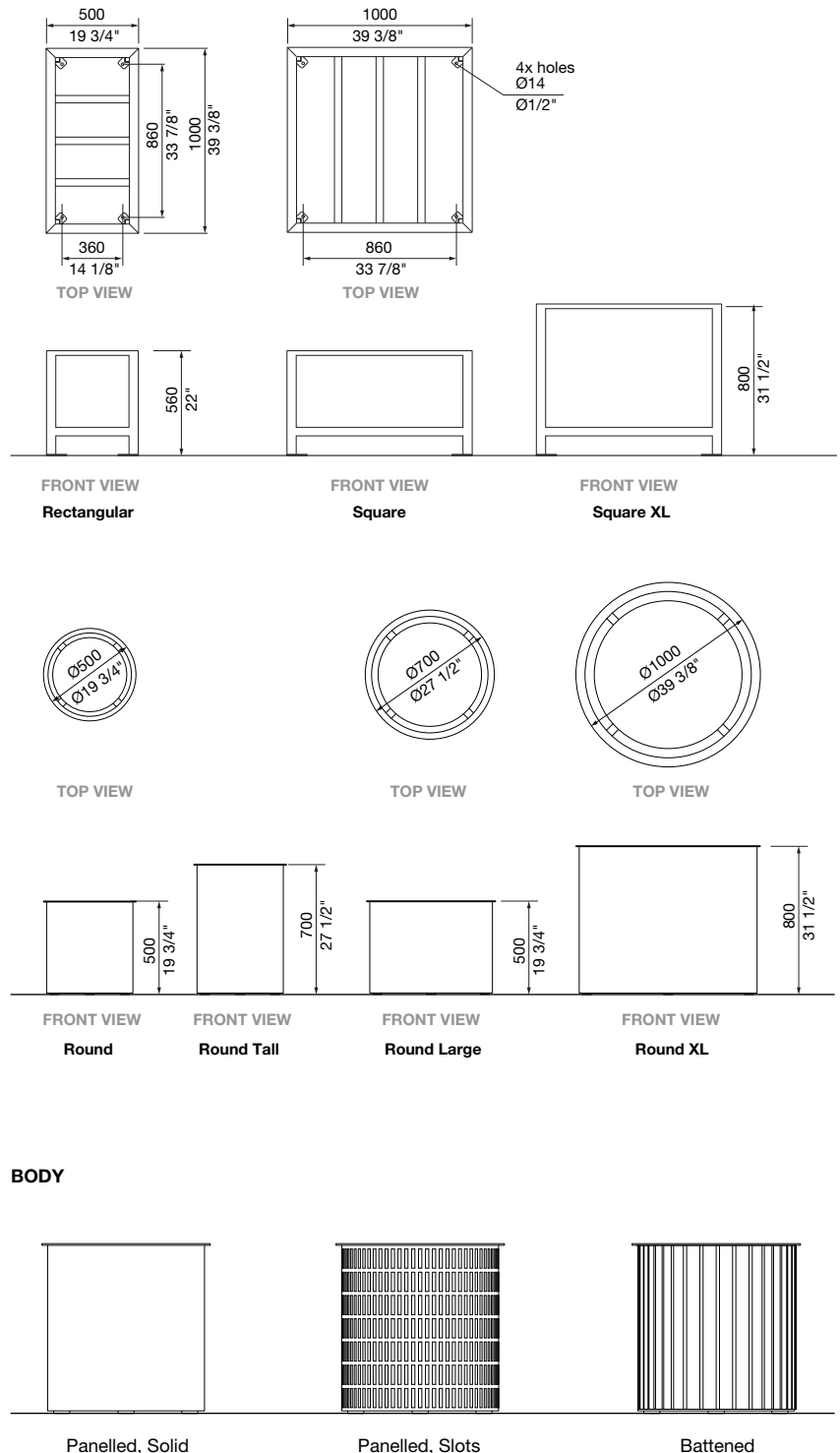
[See Colour Chart](#)

Fabricated Aluminium Powder Coated

**BODY:**

- Panelled
  - Solid
  - Slots
  - Custom Perforations
- Battened
  - Aluminium Woodgrain [See Colour Chart](#)
  - Aluminium Powder Coated [See Colour Chart](#)
    - Single Colour
    - Multicolour
  - Aluminium Anodised
  - Eco-certified Hardwood Oiled\*

\*Sourced from certified managed forests (PEFC or FSC). Hardwood needs re-oiling every 3 months. For a wood look with low maintenance, choose Aluminium Woodgrain (also known as Wood Without Worry).



# frame planter

This is a carbon neutral product.



**LINER:**

- Black Polyliner (for Rectangular and Square Planter)
- Aluminium Liner (for Square XL and all Round Planter)

**MOUNTING:**

- Surface Fixed
- Surface Fixed with Adjustable Feet
- Freestanding
- Tailored

**OPTIONAL EXTRAS:**

*Additional cost applies.*

- WaterUps® Wicking Bed  
*Integrated in the liner with 130mm depth.  
Not available for Round Ø500 x 500H (mm).*
- Drip Tray

Some options incur additional fees and lead time.

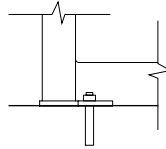
**Need more information?**

For a brochure, image gallery, CAD downloads, installation and maintenance guides, go to:  
[streetfurniture.com/au/product/frame-planter/](http://streetfurniture.com/au/product/frame-planter/)

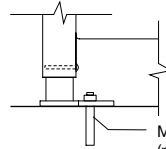
**Quick links:**

- [streetfurniture.com/au/colour-chart/](http://streetfurniture.com/au/colour-chart/)
- [streetfurniture.com/au/warranty/](http://streetfurniture.com/au/warranty/)

**MOUNTING**

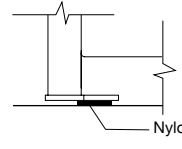


FRONT VIEW  
Surface Fixed



FRONT VIEW  
Surface Fixed with Adjustable Feet

M12 Dynabolt (not supplied)

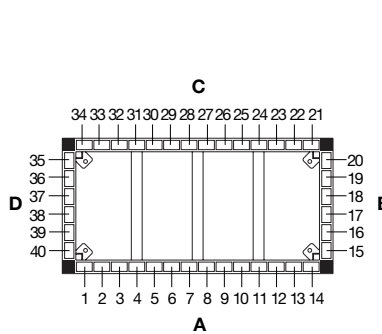


FRONT VIEW  
Freestanding

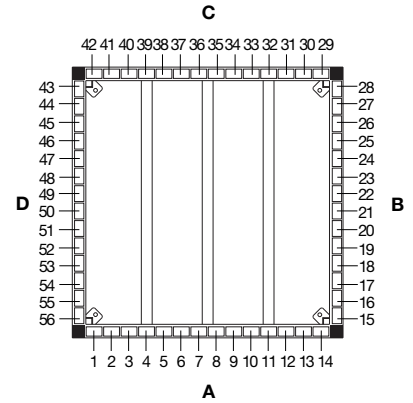
Nylon Skid

**BATTEN MAP**

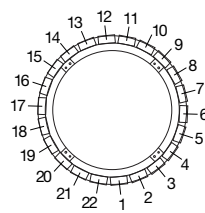
Refer to numbers to specify multicolour battens.



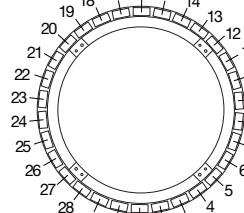
Rectangular



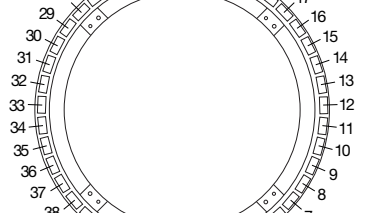
Square and Square XL



Round and Round Tall



Round Large



Round XL