

PowerMe 2 is the next-generation solution for charging devices in the open-air for public use.

The multi-functional side table can be used to place coffee cups, charge phones on the go, or plug in the laptop to work outdoors.

PowerMe 2 is a tough standalone product that is stronger and more water-resistant (IP55) compared to its predecessor.

MCODE:
PM2

DIMENSIONS:
300W x 520L x 685H (mm)
11 3/4" W x 20 1/2" L x 27" H

Select one box per category to specify your product.

CONFIGURATION:

- ☐ Dual wireless charging pad only
- ☐ Dual wireless charging pad and power outlet

Power outlet options:

- ☐ Qty 1 GPO, Qty 2 USB ports
- ☐ Qty 2 GPO
- ☐ Qty 4 USB ports

MOUNTING:

- ☐ Surface fixed
- ☐ Subsurface fixed

TABLE TOP COLOUR:

Textura is highly recommended.

- ☐ Aluminium powder coated ([see colour chart](#))

FRAME (TRAY AND LEG) COLOUR:

Textura is highly recommended.

For custom etching, select a dark colour.

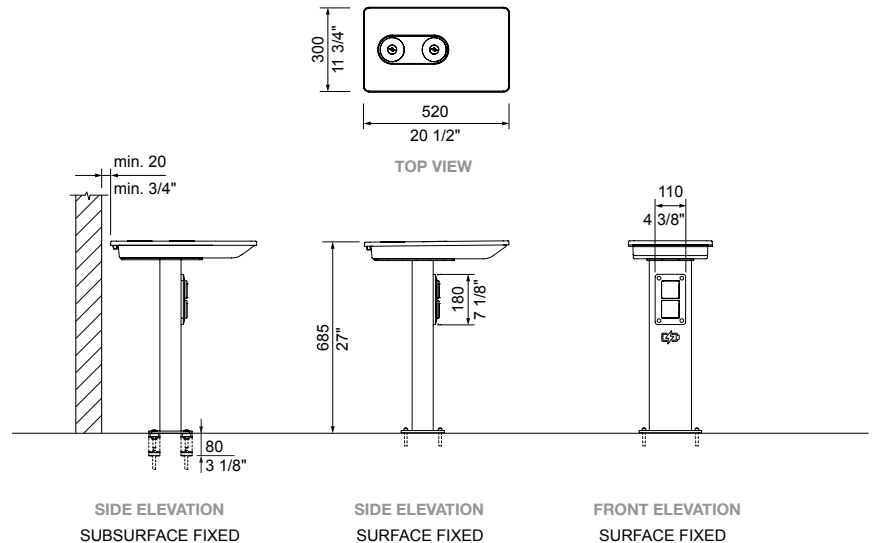
- ☐ Aluminium powder coated ([see colour chart](#))

POWER MONITORING:

Additional cost applies.

- ☐ No
- ☐ Yes (4G Watt Watchers)

Some options incur additional fees and lead time.



Qty 2 GPO

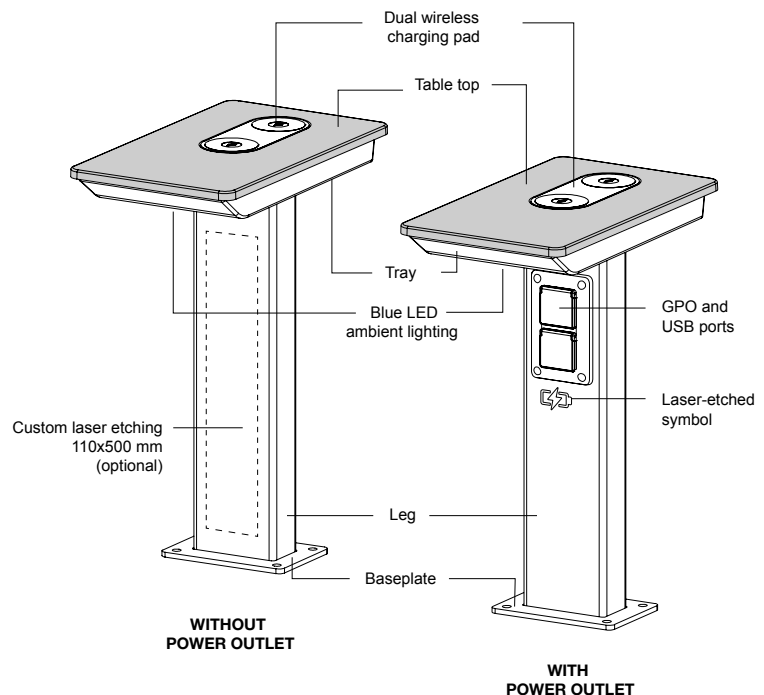


Qty 1 GPO
Qty 2 USB ports



Qty 4 USB ports

POWER OUTLET OPTIONS



ISOMETRIC VIEW

Need more information?

For a brochure, image gallery, CAD downloads, installation and maintenance guides, go to:

streetfurniture.com/product/powerme-2-table/

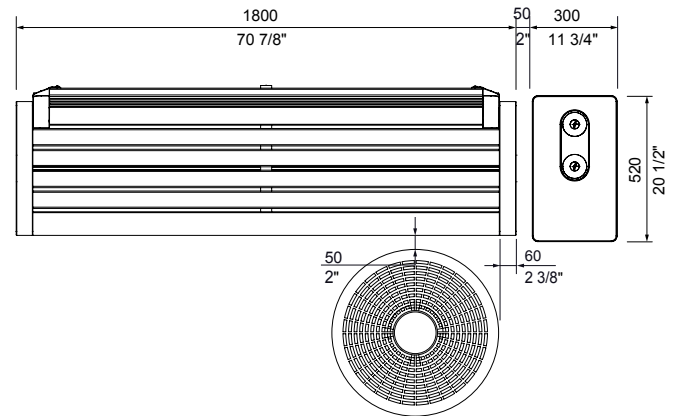
Quick links:

streetfurniture.com/au/colour-chart/

streetfurniture.com/au/warranty/

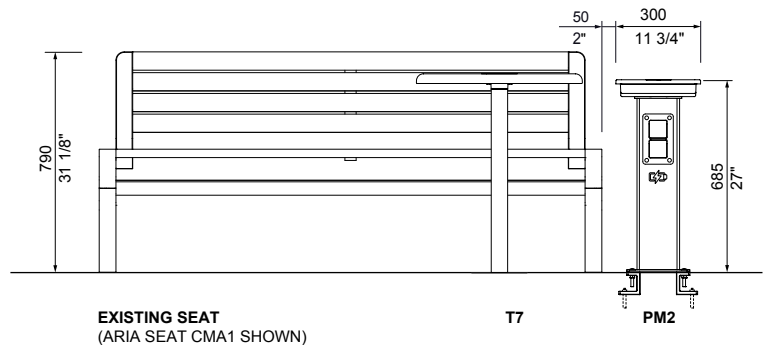
streetfurniture.com/au/parts-promise/

SETTING EXAMPLE:



TOP VIEW

PowerMe 2 Table (PM2) with
Aria Seat (CMA1) and Cafe Macchiato Table (T7)



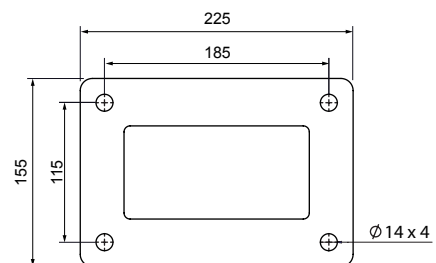
EXISTING SEAT
(ARIA SEAT CMA1 SHOWN)

T7

PM2

FRONT VIEW

PowerMe 2 Table (PM2) with
Aria Seat (CMA1) and Cafe Macchiato Table (T7)



BASE PLATE DETAIL