

mall platform

This is a carbon neutral product.



Comfortable and timeless, the platform provides both a seating and table solution in one. Ideal for picnic and rest areas.

MCODE: CMM9

DIMENSIONS:

1750L x 1815W x 390H (mm)

68 7/8" L x 71 7/16" W x 15 3/8" H

Select one box per category to specify your product.

CONFIGURATION:

- 1750mm x 1815mm | 68 7/8" x 71 1/2"
- Tailored

LEG AND MOUNTING:

- Post
 - Surface Fixed with Cast Base
 - Subsurface Fixed with Baseplate
 - Core Drilled (300mm Below Ground)
- Pedestal
 - Surface Fixed
 - Subsurface Fixed
 - Freestanding
- Plinth (Fixed on Top of Wall)

FRAME:

[See Colour Chart](#)

- Cast Aluminium Powder Coated

BATTEN:

Eco-certified Wood*

- WoodPlus™ (Engineered Wood, FSC)
 - Raw
 - Oiled
- Hardwood, Oiled (PEFC)

Low-carbon Aluminium**

- Aluminium Woodgrain [See Colour Chart](#)
- Aluminium Powder Coated [See Colour Chart](#)
 - Single Colour
 - Multicolour
- Aluminium Anodised

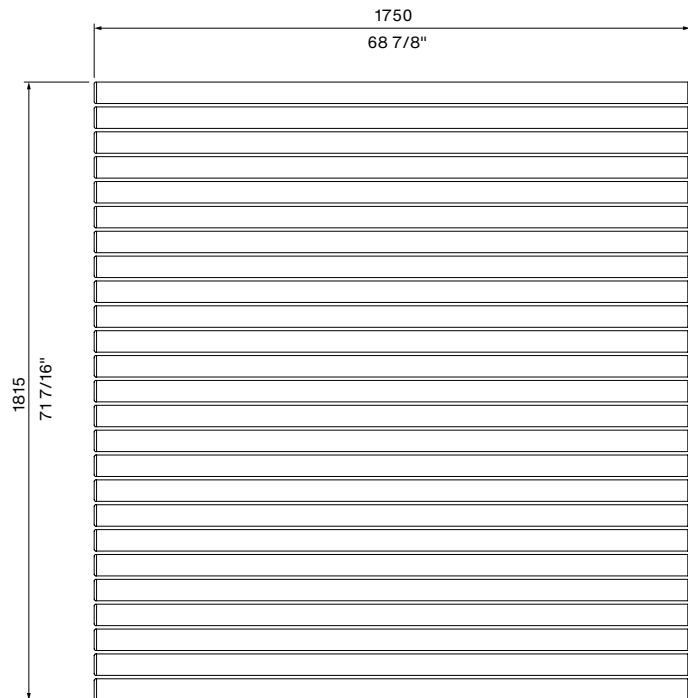
*Oiled wood needs re-oiling every 3 months, while raw wood can be left to silver naturally. For a fade-resistant, low-maintenance timber look, choose Aluminium Woodgrain (also known as Wood Without Worry™).

**Low-carbon aluminium is produced using renewable energy instead of fossil fuels and is infinitely recyclable.

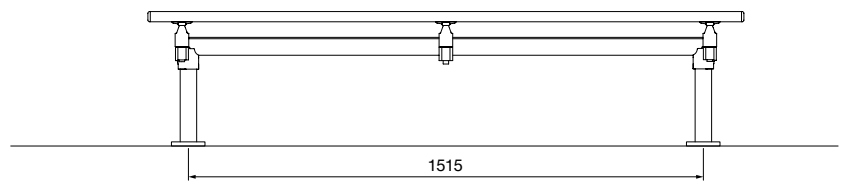
BATTEN ENDCAP COLOUR:

- Match Batten
- Match Frame

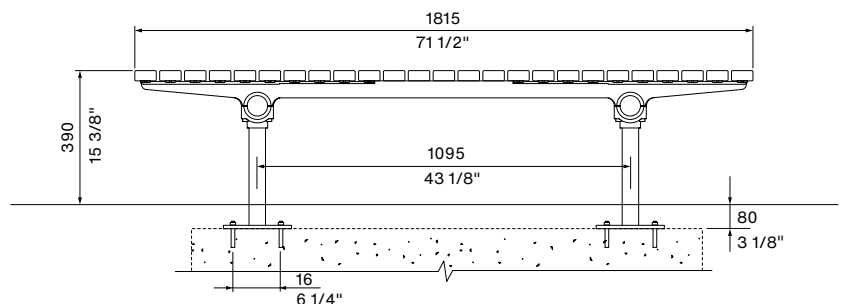
Some options incur additional fees and lead time.



TOP VIEW



FRONT VIEW
Surface Fixed



SIDE VIEW
Subsurface Fixed

mall platform

This is a carbon neutral product.



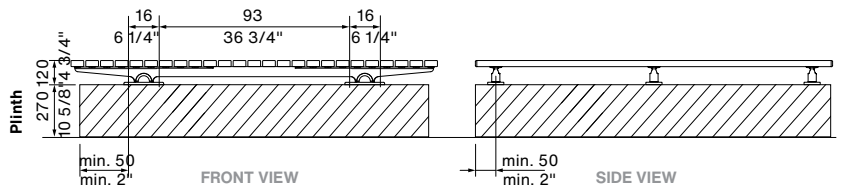
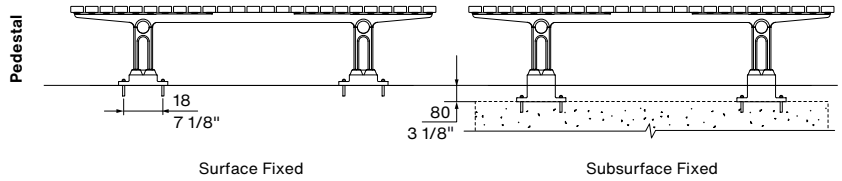
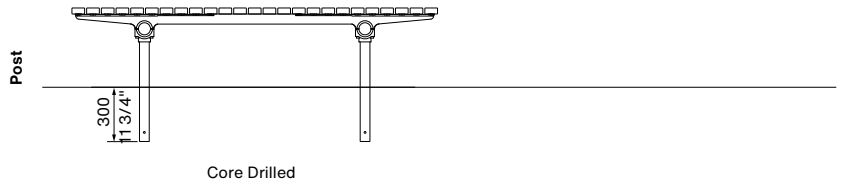
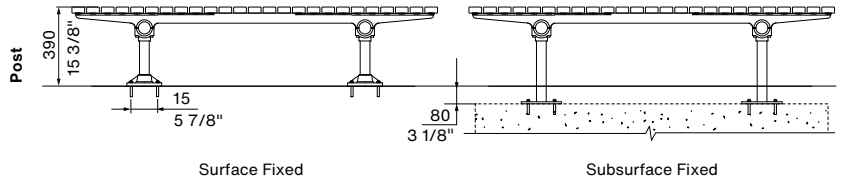
Need more information?

For a brochure, image gallery, CAD downloads, installation and maintenance guides, go to: streetfurniture.com/au/product/mall-platform/

Quick links:

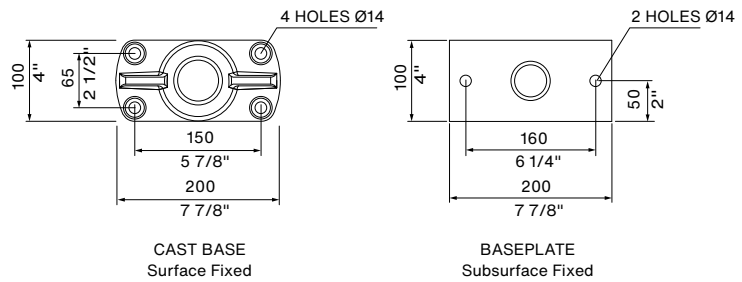
streetfurniture.com/au/colour-chart/
streetfurniture.com/au/warranty/

LEG AND MOUNTING



Fix to Top of Wall

BASE DETAIL



BATTEN MAP

Refer to numbers to specify multicolour battens.

