

# classic plaza seat

The Classic Plaza Seat features slender battens in a wave profile, made from eco-certified hardwood or aluminium, supported by strong stainless steel frames.

Select one box per category to specify your product.

MCODE:

Classic Plaza Standard Seat CMP1

Classic Plaza DDA Seat CMP5

Classic Plaza Back-to-Back Seat CMP1A

TYPE AND DIMENSION:

- Standard**  
705W x 800H x various lengths (mm)  
27 3/4" W x 31 1/2" H x various lengths
- DDA (Accessible Upright Seat)\***  
585W x 850H x various lengths (mm)  
23" W x 33 1/2" H x various lengths
- Back-to-Back**  
1420W x 800H x various lengths (mm)  
55 7/8" W x 31 1/2" H x various lengths

\*DDA/ADA compliant seats must be specified with armrests.

MOUNTING:

- Surface Fixed
- Subsurface Fixed
- Core Drilled

LENGTH:

- 1750mm | 68 7/8"
- 2100mm | 82 5/8"
- Tailored

LEG HEIGHT:

- Standard
- Tall for Accessible Picnic Settings

BATTEN:

Eco-certified Wood\*

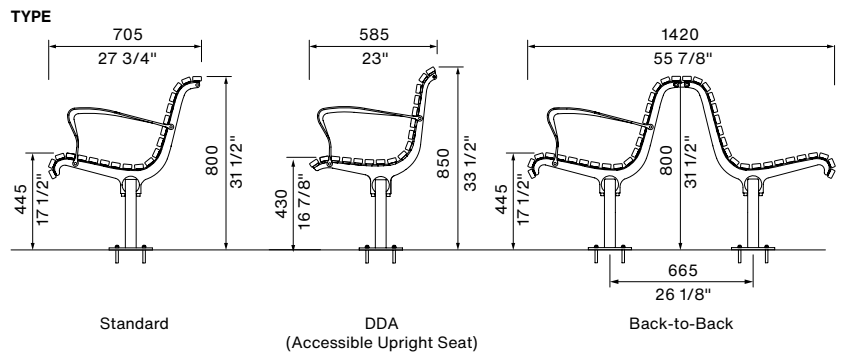
- WoodPlus™ (Engineered Wood, FSC)
  - Raw
  - Oiled
- Hardwood, Oiled (PEFC)

Low-carbon Aluminium\*\*

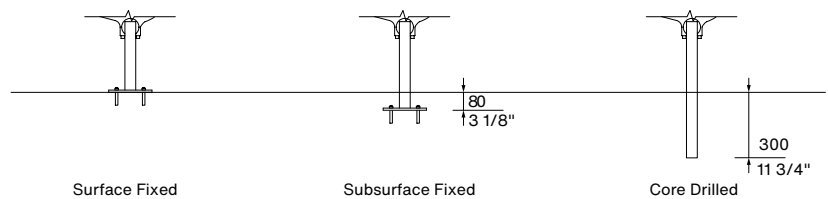
- Aluminium Woodgrain [See Colour Chart](#)
- Aluminium Powder Coated [See Colour Chart](#)
  - Single Colour
  - Multicolour
- Aluminium Anodised

\*Oiled wood needs re-oiling every 3 months, while raw wood can be left to silver naturally. For a fade-resistant, low-maintenance timber look, choose Aluminium Woodgrain (also known as Wood Without Worry™).

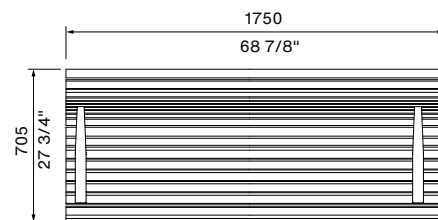
\*\*Low-carbon aluminium is produced using renewable energy instead of fossil fuels and is infinitely recyclable.



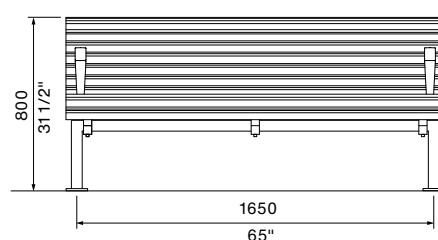
MOUNTING



LENGTH

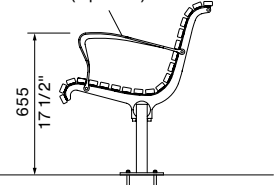


FRONT VIEW

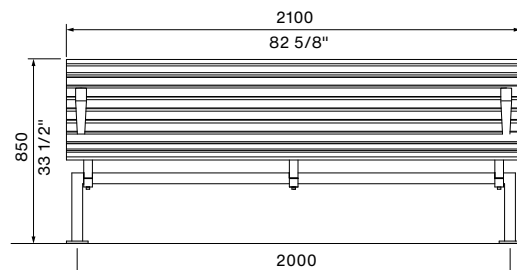


Standard, 1750mm

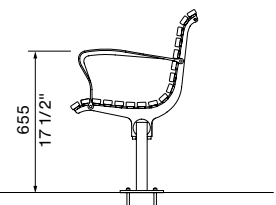
Arm (Optional)



Standard, 1750mm



DDA, 2100mm



DDA, 2100mm

# classic plaza seat

**FRAME:**

[See Colour Chart](#)

- Stainless 304 Powder Coated

**ARM:**

Dark colours are not recommended for areas in constant direct sunlight.

- None
- Bolt-on Angle Arms
  - Powder Coated [See Colour Chart](#)
  - Polished

**ARM QUANTITY:**

- 2
- 3

**BATTEN ENDCAP COLOUR:**

- Match Batten
- Match Frame

Some options incur additional fees and lead time.

All products are made-to-order, quality-controlled and dispatched from the factory floor to ISO standards.

**Need more information?**

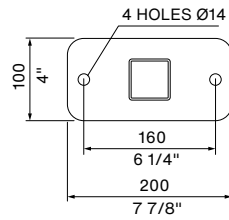
For a brochure, image gallery, CAD downloads, installation and maintenance guides, go to:

[streetfurniture.com/au/product/classic-plaza-seat/](http://streetfurniture.com/au/product/classic-plaza-seat/)

**Quick links:**

[streetfurniture.com/au/colour-chart/](http://streetfurniture.com/au/colour-chart/)  
[streetfurniture.com/au/warranty/](http://streetfurniture.com/au/warranty/)

**BASEPLATE DETAIL**



**BATTEN MAP**

Refer to numbers to specify multicolour battens.

