

semi hoop

This is a
carbon neutral
product.



The wide U-shaped bicycle stand wholly supports the bicycle at two points.
Complies with AS2890.3 Class 3.

DIMENSIONS:

845L x 120W x 850H (mm)

33 1/4" L x 4 3/4" W x 33 1/2" H

Select one box per category to specify your product.

PIPE:

[See Colour Chart](#)

- ☐ Stainless 304 No.4 (Powder Coated)
- ☐ Stainless 316 No.4 (Powder Coated)
- ☐ Stainless 304 No.4 (Brushed)
- ☐ Stainless 316 No.4 (Brushed)

MOUNTING:

- ☐ Surface Fixed
- ☐ Subsurface Fixed
- ☐ Core Drilled (300mm Below Ground)

Some options incur additional fees and lead time.

Need more information?

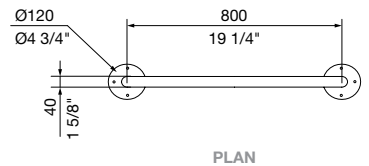
For a brochure, image gallery, CAD downloads, installation and maintenance guides, go to:

streetfurniture.com/au/product/semi-hoop/

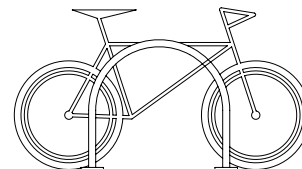
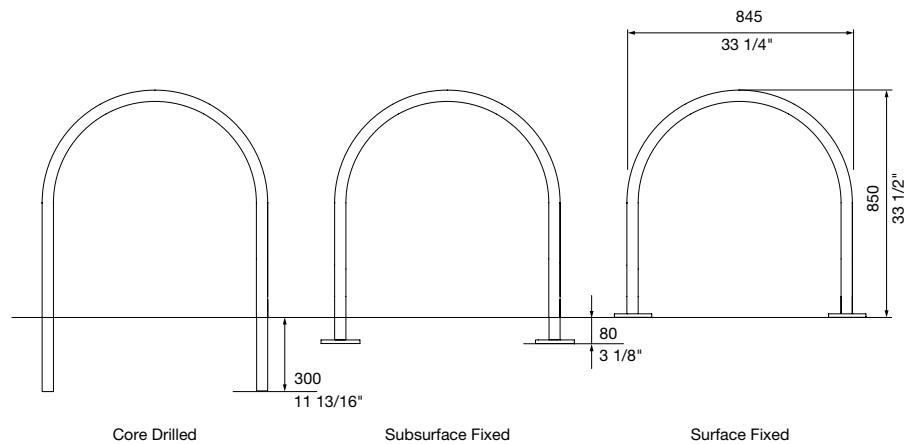
Quick links:

streetfurniture.com/au/colour-chart/

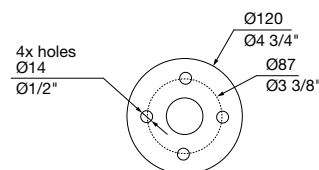
streetfurniture.com/au/warranty/



MOUNTING



FRONT VIEW WITH BIKE



BASE PLATE DETAIL