

**Playful and adaptive furniture for outdoor use.**

MCODE:  
ET7

DIMENSIONS:  
630W x various heights and lengths (mm)  
24 13/16" W x various heights and lengths

Select one box per category to specify your product.

**HEIGHT:**

- 530mm | 20 7/8"
- 590mm | 23 1/4"
- 730mm | 28 3/4"
- 760mm | 29 15/16" (standard)

**LENGTH:**

- 1500mm | 59 1/16"
- 1800mm | 70 7/8"
- 2500mm | 98 7/16"

**FRAME:**

- Cast aluminium powder coated  
(see colour chart)

**MOUNTING:**

- Surface fixed
- Subsurface fixed
- Core Drilled

**BATTEN:**

Street Furniture Australia uses sustainable timber from certified managed forests. Timber requires oiling every three months. For a timber look with low maintenance, choose aluminium woodgrain.

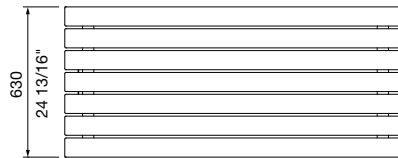
- Eco-certified hardwood oiled
- Aluminium anodised
- Aluminium powder coated (see colour chart)
- Aluminium woodgrain (see colour chart)
- Tailored

**BATTEN END CAP:**

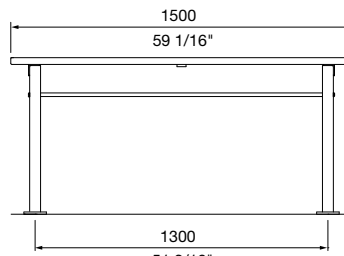
Solid powder colour applies to aluminium battens only.

- Match batten colour
- Match frame colour
- Tailored (see colour chart)

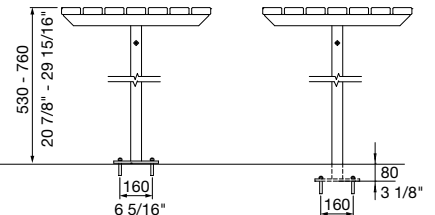
Some options incur additional fees and lead time.



PLAN VIEW

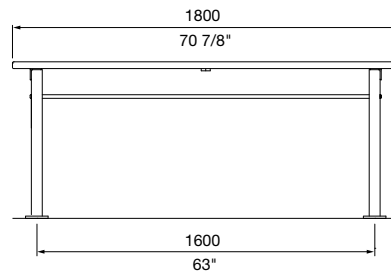


FRONT VIEW  
1500mm

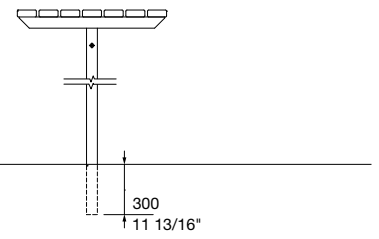


SIDE VIEW  
SURFACE FIXED

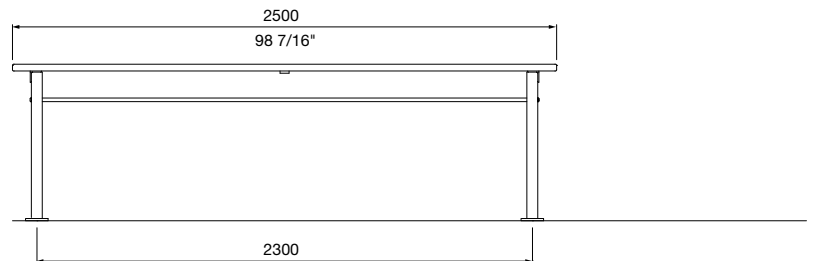
SIDE VIEW  
SUBSURFACE FIXED



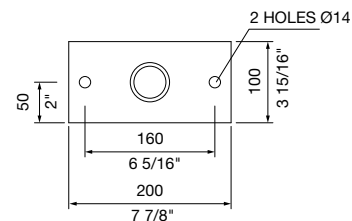
FRONT VIEW  
1800mm



SIDE VIEW  
CORE DRILLED



FRONT VIEW  
2500mm



BASEPLATE DETAIL  
SUBSURFACE FIXED

**COMPATIBLE SEATING:**

Refer to separate technical sheet.

- Escola Slim Bench (EB3)

**Need more information?**

For a brochure, image gallery, CAD downloads, installation and maintenance guides, go to:

[streetfurniture.com/au/product/escola-table/](http://streetfurniture.com/au/product/escola-table/)

**Quick links:**

[streetfurniture.com/au/colour-chart/](http://streetfurniture.com/au/colour-chart/)

[streetfurniture.com/au/warranty/](http://streetfurniture.com/au/warranty/)

[streetfurniture.com/au/parts-promise/](http://streetfurniture.com/au/parts-promise/)

