

linea lookout table

This is a
carbon neutral
product.



Create the perfect spot for people watching or to look out to a view. Available with a battened or solid table top in various lengths and colours. Stools are sold separately

DIMENSIONS:

Standard Height:

445W x 720H x various lengths (mm)
17 1/2" W x 28 3/8" H x various lengths

Bar Height:

445W x 1050H x various lengths (mm)
17 1/2" W x 41 3/8" H x various lengths

Select one box per category to specify your product.

TYPE:

- ☐ Standard Table
☐ Bar Table

LENGTH:

- ☐ 1500mm | 59"
☐ 1800mm | 70 7/8"
☐ 2200mm | 82 5/8"*
☐ Tailored

*Only available for Lookout Bar Table.

TABLE TOP:

- ☐ Battered
- ☐ Aluminium Woodgrain [See Colour Chart](#)
 - ☐ Aluminium Powder Coated [See Colour Chart](#)
 - ☐ Single Colour
 - ☐ Multicolour
 - ☐ Aluminium Anodised
 - ☐ Eco-certified Engineered Wood Oiled*
 - ☐ Eco-certified Hardwood Oiled*
- *Sourced from certified managed forests (PEFC or FSC). Hardwood needs re-oiling every 3 months. For a wood look with low maintenance, choose Aluminium Woodgrain (also known as Wood Without Worry).*
- ☐ Solid, Aluminium Powder Coated [See Colour Chart](#)

FRAME:

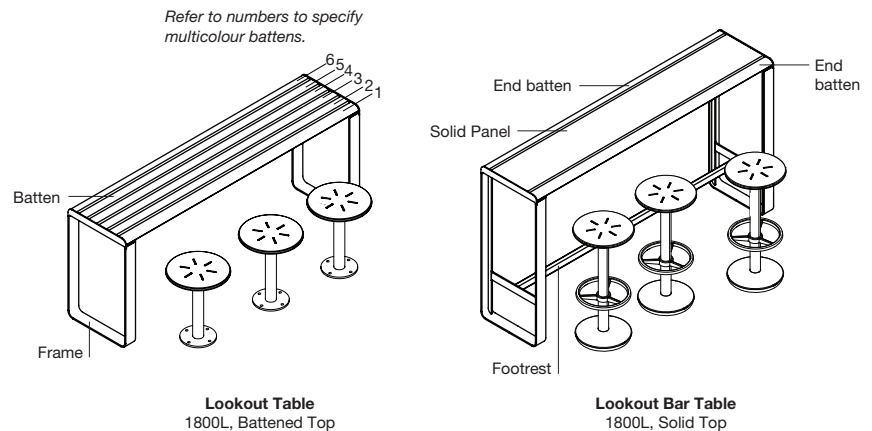
[See Colour Chart](#)

- ☐ Stainless 304 Powder Coated
☐ Stainless 316 Powder Coated

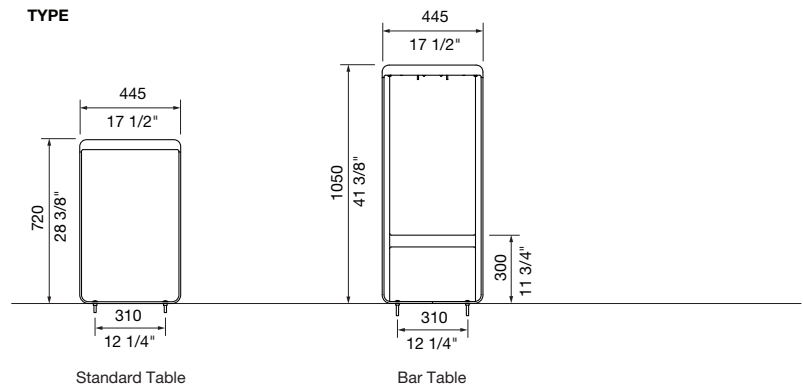
MOUNTING:

- ☐ Surface Fixed
☐ Subsurface Fixed

Some options incur additional fees and lead time.

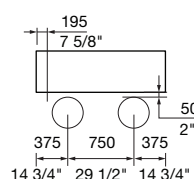


TYPE

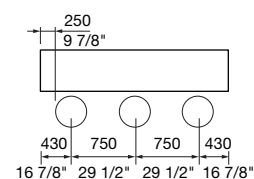


CONFIGURATION EXAMPLES

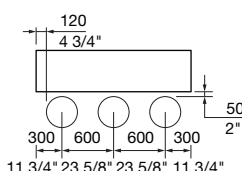
2T, 1500mm



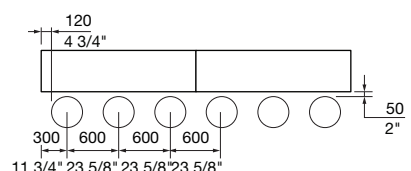
3T, 2200mm (Bar Lookout Table Only)



3T, 1800mm



3T-3T, 3600mm



linea lookout table

This is a
carbon neutral
product.



Need more information?

For a brochure, image gallery, CAD downloads, installation and maintenance guides, go to:
streetfurniture.com/au/product/linea-lookout-table/
streetfurniture.com/au/product/linea-lookout-bar-table/

Quick links:

streetfurniture.com/au/colour-chart/
streetfurniture.com/au/warranty/

