

concourse seat



Stylish and robust, this modular seating system adds sophistication to transport hubs, parks, streetscapes and retail precincts. This DDA-compliant seat is extremely durable and requires minimal maintenance.

DIMENSIONS:

610W x 840H x various lengths (mm)
24" W x 33 1/8" H x various lengths

Select one box per category to specify your product.

FRAME:

[See colour chart](#)

- Cast aluminium Palladium Silver
- Cast aluminium powder coated

LEG AND MOUNTING:

- 01 Splay Wide
 - Surface fixed
 - Subsurface fixed
 - Freestanding
- 02 Arch
 - Surface fixed
 - Subsurface fixed
 - Freestanding
- 04 Pedestal
 - Surface fixed
 - Subsurface fixed
- 05 Post
 - Surface fixed with cast base
 - Subsurface fixed with base plate
 - Core drilled (300mm below ground)
- 06 Tee Wide
 - Surface fixed
 - Subsurface fixed
 - Freestanding
- 07 Wall Wide (fixed to side of wall)
- 11 Plinth (fixed on top of wall)

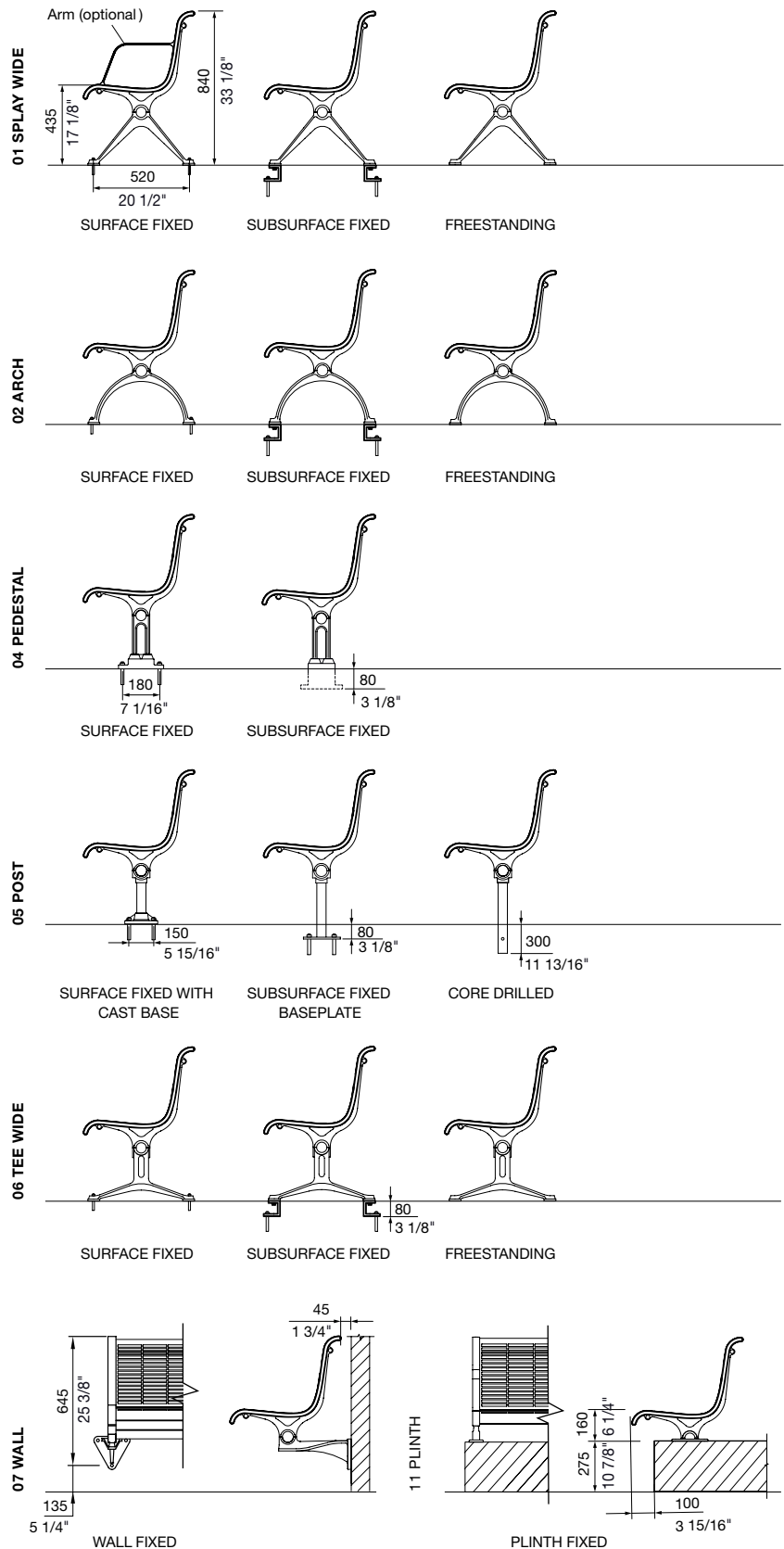
ARM:

Dark colours are not recommended for areas in constant direct sunlight.

- None
- Integral arms

ARM QUANTITY:

- 2 end arms
- Arms for every seat
- Tailored



concourse seat

This is a carbon neutral product.



PANEL:

[See colour chart](#)

- Cast aluminium powder coated
- Tailored

LENGTH:

- 1-seater (690mm | 27 1/8")
- 2-seater (1320mm | 52")
- 3-seater (1950mm | 76 3/4")
- 4-seater (2580mm | 101 5/8")
- 5-seater (3210mm | 126 3/8")
- Tailored

Some options incur additional fees and lead time.

Need more information?

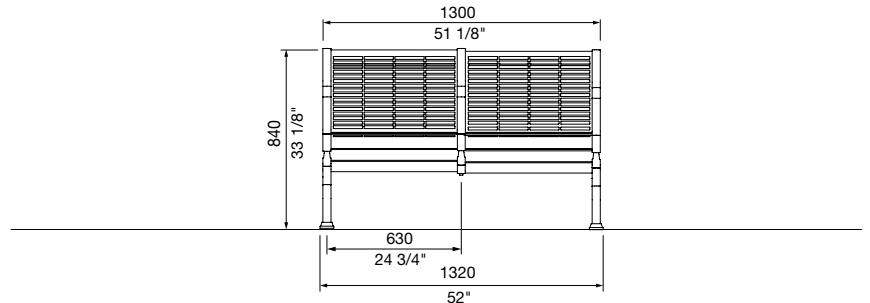
For a brochure, image gallery, CAD downloads, installation and maintenance guides, go to:

streetfurniture.com/au/product/concourse-seat/

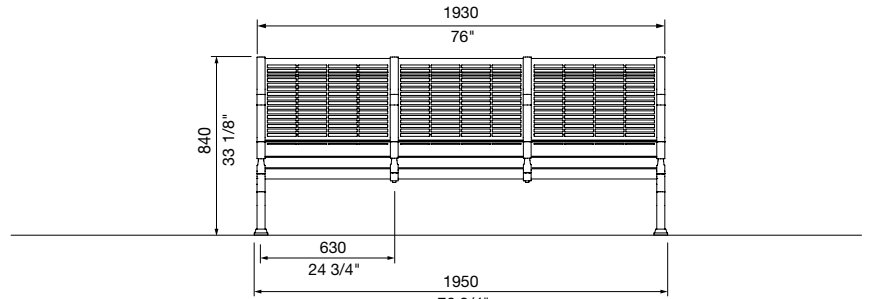
Quick links:

streetfurniture.com/au/colour-chart/

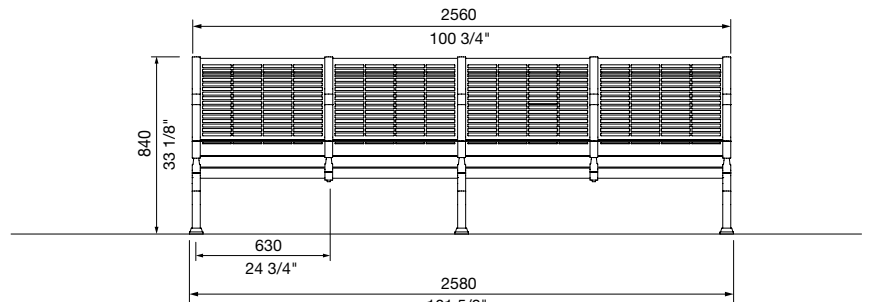
streetfurniture.com/au/warranty/



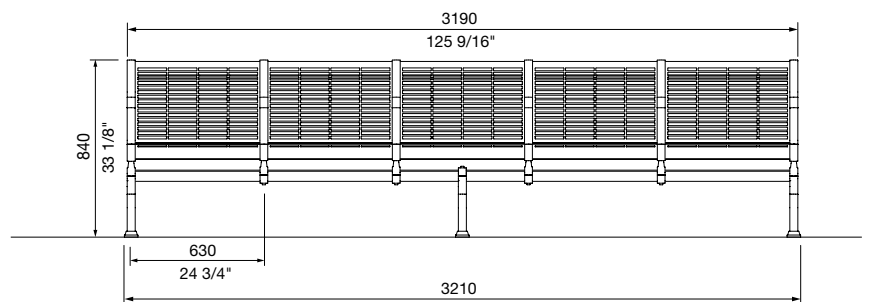
FRONT VIEW
2-SEATER



FRONT VIEW
3-SEATER



FRONT VIEW
4-SEATER



FRONT VIEW
5-SEATER