



arqua pole

installation guide

This guide relates to product:

No.	Product	MCODE
1.	Arqua Pole	DF7

This product is certified under the WaterMark standard WMTS105:2016.

Welcome and thank you for your purchase from Street Furniture Australia.

This guide refers to Arqua Pole (DF7) products: drinking pole, dog bubbler, valve kit. There are six assembly and installation instructions that may or may not be applicable to your product.

A. Arqua Pole (DF7)

This document also includes care and maintenance guide for Arqua range:

- A. How to care for Arqua range
- B. How to clean the Y-strainer (for tap model only)
- C. How to replace the filter (for filtered model only)

Before beginning installation please read through this guide thoroughly.

Important to note:

- Handle the Arqua product(s) and parts in a manner to prevent scratching, warping, bending and twisting. Do not slide parts on concrete or other hard or abrasive surfaces.
- Please check that you have received all the components. Double check with the list on the pages. The image is for example only, you should receive your selected product(s). Missing or damaged parts need to be reported to a Street Furniture sales representative.
- The sump pit is made from polycrystalline and should be handled with care. Damage to the pit caused by mishandling is not covered by warranty.

Scope of use

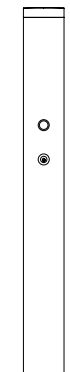
The Arqua drinking fountain range listed in this document is compatible with Australian Drinking Guidelines. Water quality tests should be conducted by the custodian on a regular basis to ensure that safe drinking water is supplied through the fountain.

- Recommended operating temperature range from minimum 5°C to maximum 60°C.
- Recommended operating pressure is 0.5 bar (50Kpa) to maximum 5 bar (500Kpa) a relief valve must be supplied and installed by the installer. Installer must check pressure from the relief valve as required.
- Drinking water connected must be at a 7pH level for human consumption.
- The Dog Bubbler is not suitable for human consumption.

Understanding Arqua Range

The Arqua range offers several product options that may require assembly on site.

Product options include:



Arqua Pole

TAP MODEL ARQUA POLE

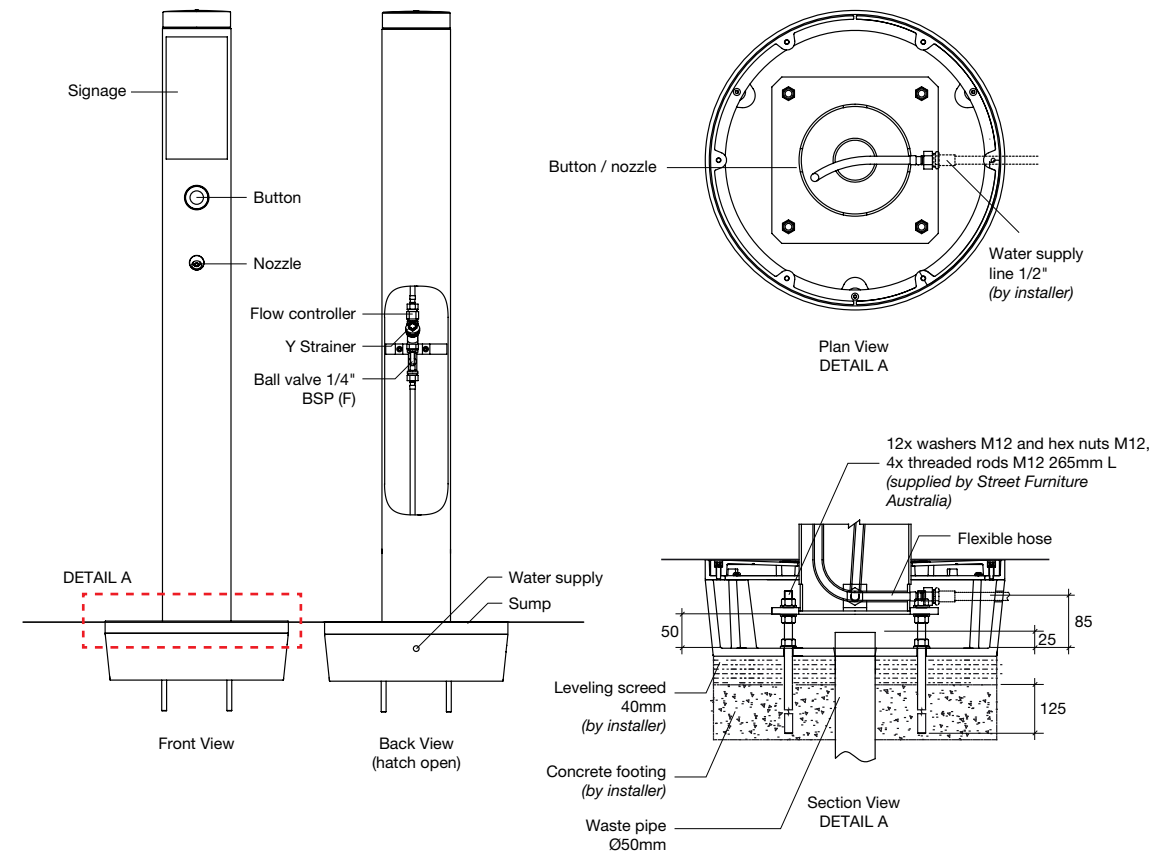


Fig. 1

assembly and installation instructions

A. HOW TO ASSEMBLE AND INSTALL ARQUA POLE (DF7)

There are two models for Arqua Pole: Tap model and Filtered model. Refer to your selected product installation diagram to understand and check your component list on the next page before starting the installation.

Important: All plumbing and drainage work should be done in accordance with local authority's regulations and installed by a licensed contractor.

Fig. 1: Tap model Arqua Pole

FILTERED MODEL ARQUA POLE

Filtered model is not WaterMark certified

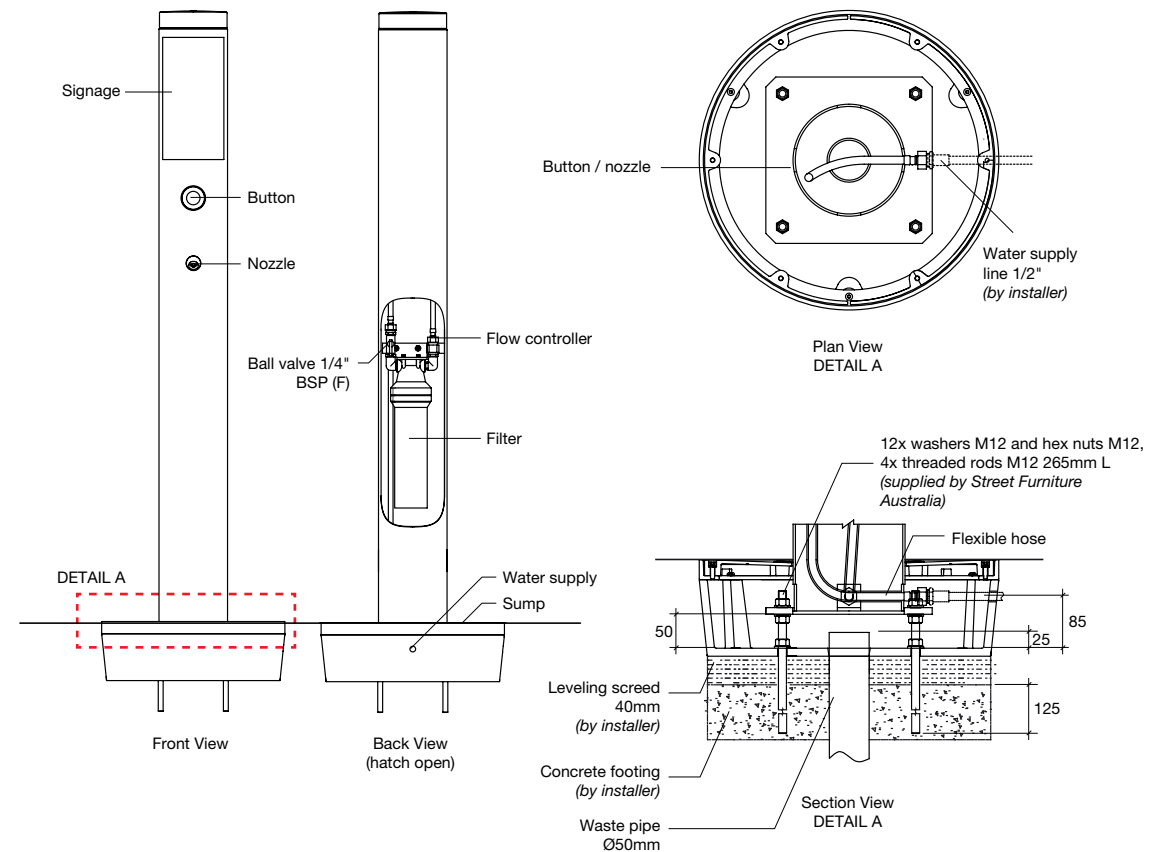


Fig. 2

assembly and installation instructions

A. HOW TO ASSEMBLE AND INSTALL ARQUA POLE (DF7) (continued)

Important: Filter requires cleaning at least once a year.

Fig. 2: Filtered model Arqua Pole

© Street Furniture Australia Pty Limited ABN 46 070 910 100

Australia 1800 027 799
United States +1 415 365 7186
International +61 2 8774 8888

Email info@streetfurniture.com
N6 391 Park Road, Regents Park
NSW 2143, Australia

Version 4 @ 16.10.23 MDP-27

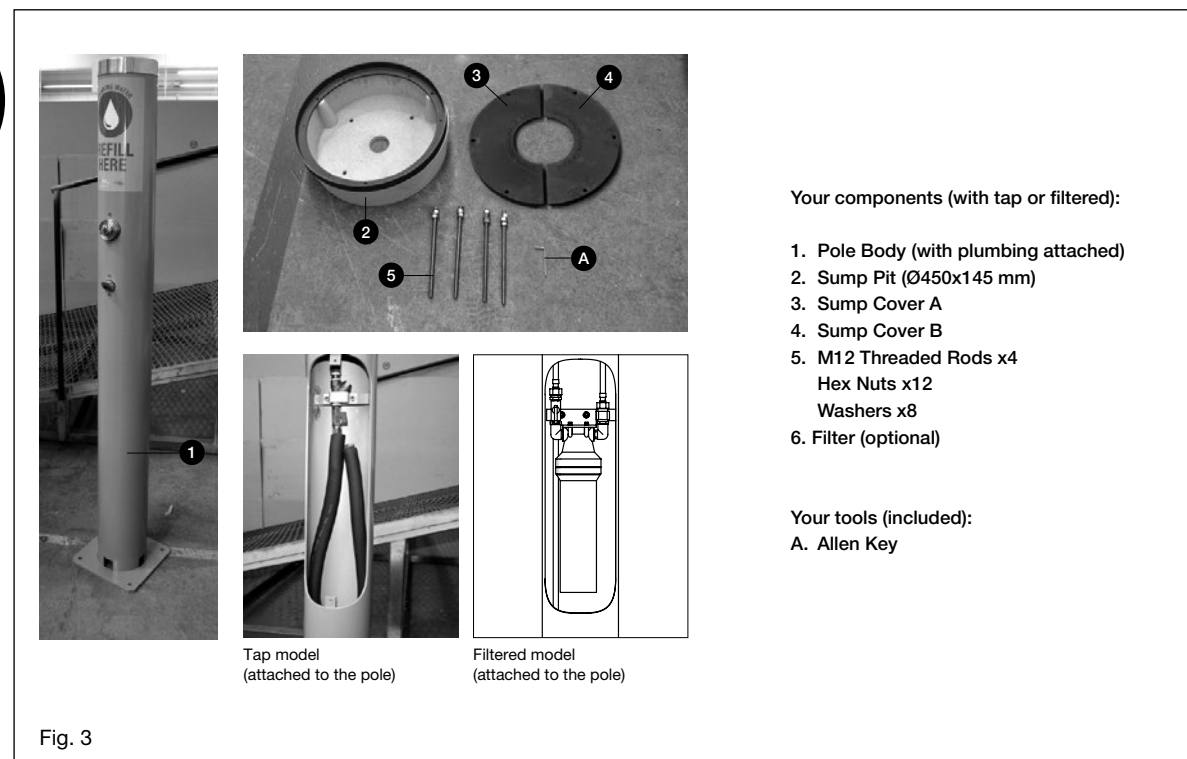
streetfurniture.com

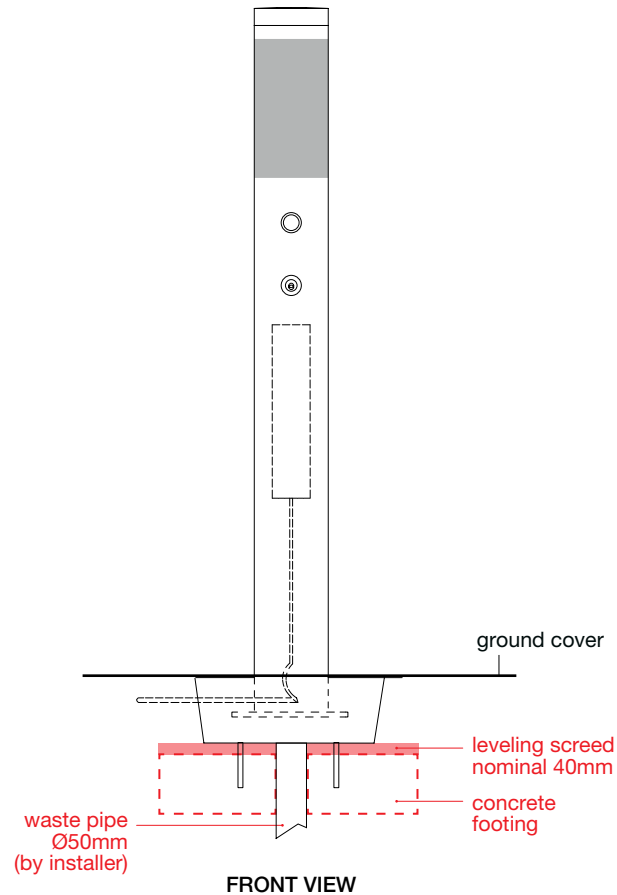
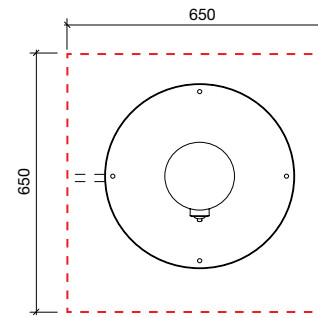


assembly and installation instructions

A. HOW TO ASSEMBLE AND INSTALL ARQUA POLE (DF7) *(continued)*

There are two parts of installation: Sump Pit Installation and Pole Installation. Sump Pit installation is the first part and will be the same for all the Arqua range. Please check that you have all the components and tools required before starting the installation **Fig. 3**.





assembly and installation instructions

A. HOW TO ASSEMBLE AND INSTALL **ARQUA POLE (DF7)** *(continued)*

Concrete footing, 25mpa:

- The footing should be 100mm wider than the sump. For an Refill Pole DF7, the footing is to be a minimum of **650x650mm**.
- A minimum **145mm thick slab** is recommended.
- Use a leveling screed between the concrete footing and the sump to allow an even installation of the sump.
- Install a reinforced slab where appropriate.

assembly and installation instructions

A. HOW TO ASSEMBLE AND INSTALL ARQUA POLE (DF7) (continued)

PART 2 - Pole Body Installation

1. Flush the supply line by turning on the water at the main source to remove any possible traces of particles or sediments from the water supply. Once completed, turn off the water supply at the main source.

2. Lower the pole body onto the threaded rods. Ensure that the bottom of the small hole that's located between the hatch and the baseplate sits in line with the pit rim **Fig. 1**. Adjust for level and height by raising and lowering the nuts supplied. Check the perpendicularity of the pole.

Note: Ensure the distance between the bottom of the pit and the Arqua Fountain baseplate is approximately 50mm.

3. Once the pole is levelled, tighten the fixing nuts above the plate. Check the perpendicularity above the plate before completely tightening the fixing nuts.
4. Use the supplied allen key to remove the hatch plate of the Arqua Pole. Feed the end of the flexible hose through the appropriate hole at the bottom of the Arqua Pole **Fig. 2**.
5. Connect the Arqua pole's flexible hose to the water supply line. Turn on the water at the main source.
6. Test the water supply by turning on ball valve and pressing the push button. Allow time for water to flush out air pockets. Allow for the water through the pipework (and filters) to flush out "new" taste.
7. Replace the hatch on the Arqua Pole and lay both Sump Covers in place and fix them using supplied screws. Clean body and sump (including the inside of the sump), the surroundings and leave neat and tidy. **Fig. 3**.

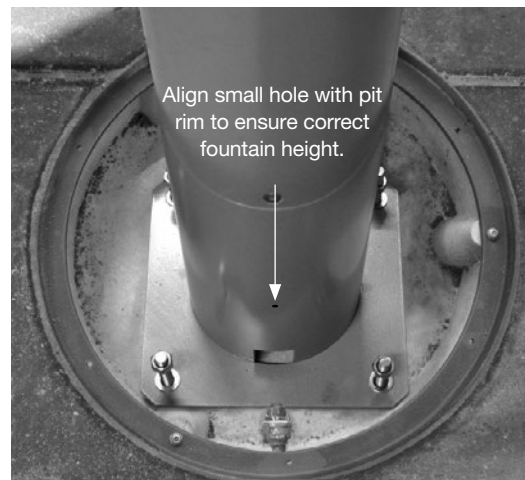


Fig. 1

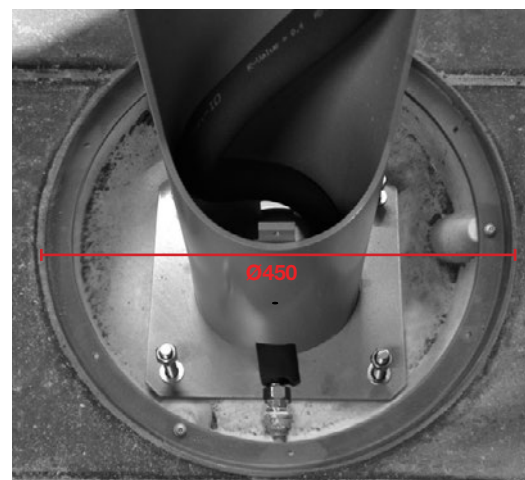


Fig. 2



Fig. 3

care and maintenance

A. HOW TO CARE FOR ARQUA RANGE

Street Furniture recommends a periodic maintenance program for cleaning, touch up and repair if needed. Its frequency is dependent on the usage or proximity to industrial or marine environments. In general, we recommend cleaning once every quarter.

Aluminum

This is a low maintenance material. However, all surfaces should be cleared of dust or dirt using clean water or a mild detergent. Do not use any abrasive detergents, scrub the surface or use a high pressured hose.

Powder Coated Materials

External surfaces should be regularly washed down, especially in corrosive conditions (eg. salt, or chemical deposits).

Any exposed metal resulting from damage to the coating should be repaired quickly to avoid corrosion stains as well as to protect the metal. Please check the powder coating code to make sure it matches the colour of your product.

Touch up of blemishes or deep scratches can be made with 'Professional Touch-Up Paint', applied using an artist's brush or fine spray.

It is available to purchase from:

CR Laurence
Ph: 1800 424 275
www.crlaurence.com.au

Available in pressure pack cans. Most Interpon powdercoat colours have been matched.

Warranty

Street Furniture warrants all products for a period of twelve months from the date of delivery against faults which are the result of poor workmanship or faulty materials.

In severe cases of abuse the valve can be damaged. This intentional damage falls outside of Street Furniture warranty guidelines of normal operation. Replacement parts and valve kits are available from Street Furniture. In the case of a warranty claim being made, the damaged component must ultimately be returned to Street Furniture for evaluation and analysis.

Please call 1800 027 799 (Toll-free Australia wide) for further assistance.

care and maintenance

B. HOW TO CLEAN THE Y-STRAINER FOR TAP MODELS ONLY

Arqua Refill Pole DF7 (Fig.1)

1. Remove the hatch of the Arqua Pole DF7.
2. Locate the ball valve and strainer.
3. Turn the water off at the ball valve.
4. Unscrew the hexagon head on the short leg of the Y-strainer.
5. Remove and flush the mesh. Take care to not damage the mesh as this strainer is required to be fully operational to maintain the warranty on the upper push valve.
6. Reassemble the strainer, and apply teflon tape to the threads where necessary.
7. Turn the water back on and check for leaks.
8. Replace the hatch.

The pit has been designed to capture sediment over time and thereby protect the drainage line, so periodically remove the pit covers and clean the interior.

TAP MODEL ARQUA POLE

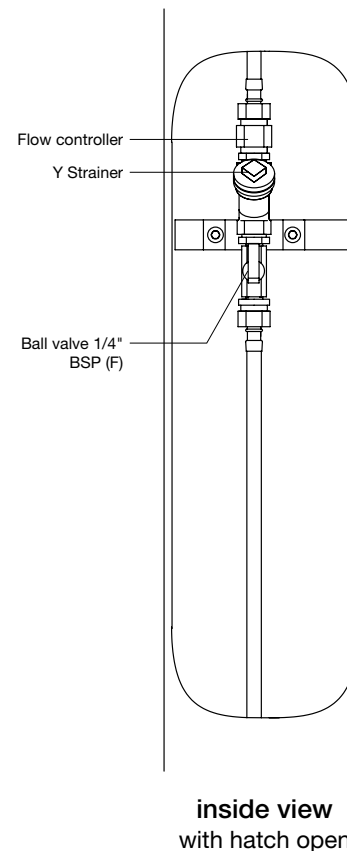


Fig. 1

care and maintenance

C. HOW TO REPLACE THE FILTER FOR FILTERED MODELS ONLY

If you have the filtered Arqua Station DF4 + DF7, the filter in the Refill Pole DF7 (which is a single use unit) needs to be replaced periodically. The interval depends on the quality of the water supply and the quantity of the water filtered. Normal replacement should be every 56,000 litres (refer also to the filter supplier's literature). Replace more frequently if the water contains a higher than normal particle count.

1. Remove the hatch plate of the Arqua Pole DF7. (Fig 1)
2. Turn off the water at the isolating ball valve. The filter is bayonet fitted into the mounting bracket.
3. Rotate the filter approximately 90 degrees and withdraw it.
4. Wipe out the inside of the mounting with a clean cloth to remove any accumulated silt.
5. Position the new filter and rotate into place. Hand-tightening only is required.
6. Turn the water back on and check for leaks. Allow for water through pipework and filters to
7. Flush out "new" taste.
8. Replace the hatch plate.

The pit has been designed to capture sediment over time and thereby protect the drainage line, so periodically remove the pit covers and clean the interior.

FILTERED MODEL ARQUA POLE

Filtered model is not WaterMark certified

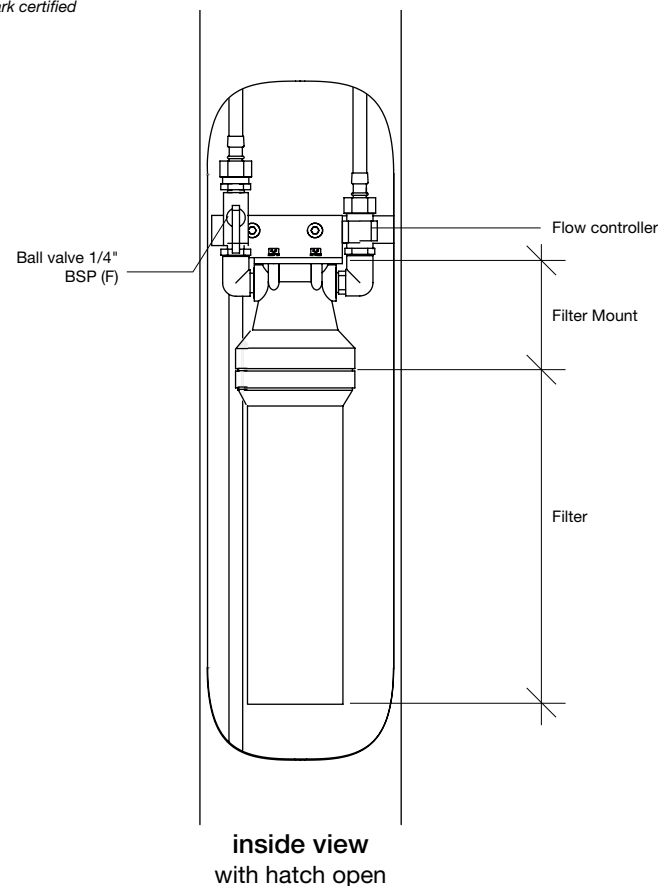


Fig. 1

Troubleshooting Arqua Fountain

What to do if too much water is coming out?

Check the valve located in the sump. The recommended pressure is between min 50kpa to max 500kpa.

No water is coming out.

Check the valve located in the sump is turned on. The recommended pressure is between min 50kpa to max 500kpa.

How to clean the fountain?

Street Furniture recommends a periodic maintenance program for cleaning, touch up and repair if needed. Its frequency is dependent on the usage or proximity to industrial or marine environments. In general, we recommend cleaning once every quarter.

What is the recommended drinking water pH level?

Recommended drinking water to have a pH level between 6.5 to 8.5pH.

What is the operating temperature for the fountain?

Operating temperature range is between 25°C to max 40°C.

My fountain seems to be blocked.

There can be a number of reasons why your drinking fountain is not supplying water from the drinking spouts. First look at the spout and make sure there are no obstructions. Remove the physical obstruction from the spout with a tweezer. If nothing is obstructing the spout, check the valve located in the sump for the water pressure, it should be between min 50kpa to max 500kpa.

What is the water flow rate?

1.5 L/min.

How to clean the fountain?

All surfaces should be cleared of dust or dirt using clean water or a mild detergent. Do not use any abrasive detergents, scrub the surface or use a high pressure hose.

Can you have filtered water?

Filtered water is available when ordering the Arqua Refill Pole or the Arqua Station.

How often should the filter cartridge be changed?

Dependant on the water usage, however we recommend a replacement every 6-12 month.

What is the warranty period for the Arqua Fountains?

Street Furniture warrants all products for a period of twelve months from the date of delivery against faults which are the result of poor workmanship or faulty materials.

Does the Arqua Fountain have a Wels Rating? (Star Rating or Water Efficiency)

Arqua fountain has a 6 star WELS rating and the fountain can be legally used anywhere because it has Watermark certification.

**Watermark is not applicable to dog bubblers configurations.*

Where are your products made?

The arqua fountain is manufactured in Australia.