



arqua station

installation guide

This guide relates to product:

| No. | Product | MCODE |
|-----|--------------------------------|------------|
| 1. | Arqua Station | DF4-DF7 |
| 2. | Arqua Station with Dog Bubbler | DF4-DB-DF7 |

This product is certified under the WaterMark standard WMTS105:2016.

Welcome and thank you for your purchase from Street Furniture Australia.

This guide refers to Arqua products: drinking fountain, drinking pole, drinking station, dog bubbler and valve kit. There are nine assembly and installation instruction that may or may not applicable to your product.

- A. Arqua Fountain (DF4) - *page 2*
- B. Arqua Pole (DF7) - *page 7*
- C. Arqua Station (DF4-DF7) - *page 11*
- D. Dog Bubbler Kit (DB-KIT) - *page 18*
- E. Valve Kit for Arqua Fountain (DF4) - *page 20*
- F. Push Button and Valve for Arqua Fountain (DF4) - *page 24*
- G. Touch Sensor Button for Arqua Fountain (DF4) - *page 27*
- H. Push Button and Valve for Dog Bubbler (DB-KIT) - *page 33*

This document also include care and maintenance guide for Arqua range:

- A. How to care for Arqua range - *page 37*
- B. How to clean the Y-strainer (for tap model only) - *page 38*
- C. How to replace the filter (for filtered model only) - *page 40*

Before beginning installation please read through this guide thoroughly.

Important to note:

- Handle the Arqua product(s) and parts in a manner to prevent scratching, warping, bending and twisting. Do not slide parts on concrete or other hard or abrasive surfaces.
- Please check that you have received all the components. Double check with the list on the pages. The image is for example only, you should receive your selected product(s). Missing or damaged parts need to be reported to a Street Furniture sales representative.
- The sump pit is made from polycrrete and should be handled with care. Damage to the pit caused by mishandling is not covered by warranty.
- There are several steps on this installation guide that may or may not

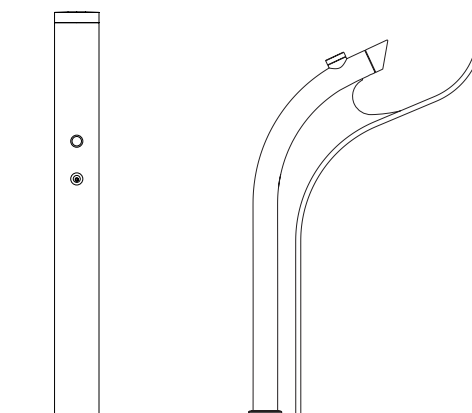
Scope of use

The Arqua drinking fountain range listed in this document is compatible with Australian Drinking Guidelines. Recommended temperature range from 25°C to 40°C. Max recommended operating temperature is 40°C and Maximum recommended operating pressure is 600 kpa.

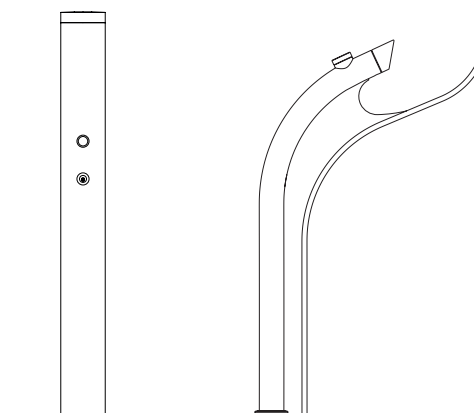
Understanding Arqua Range

The Arqua range offers several product options that may require assembly on site.

Product options include:



Arqua Station



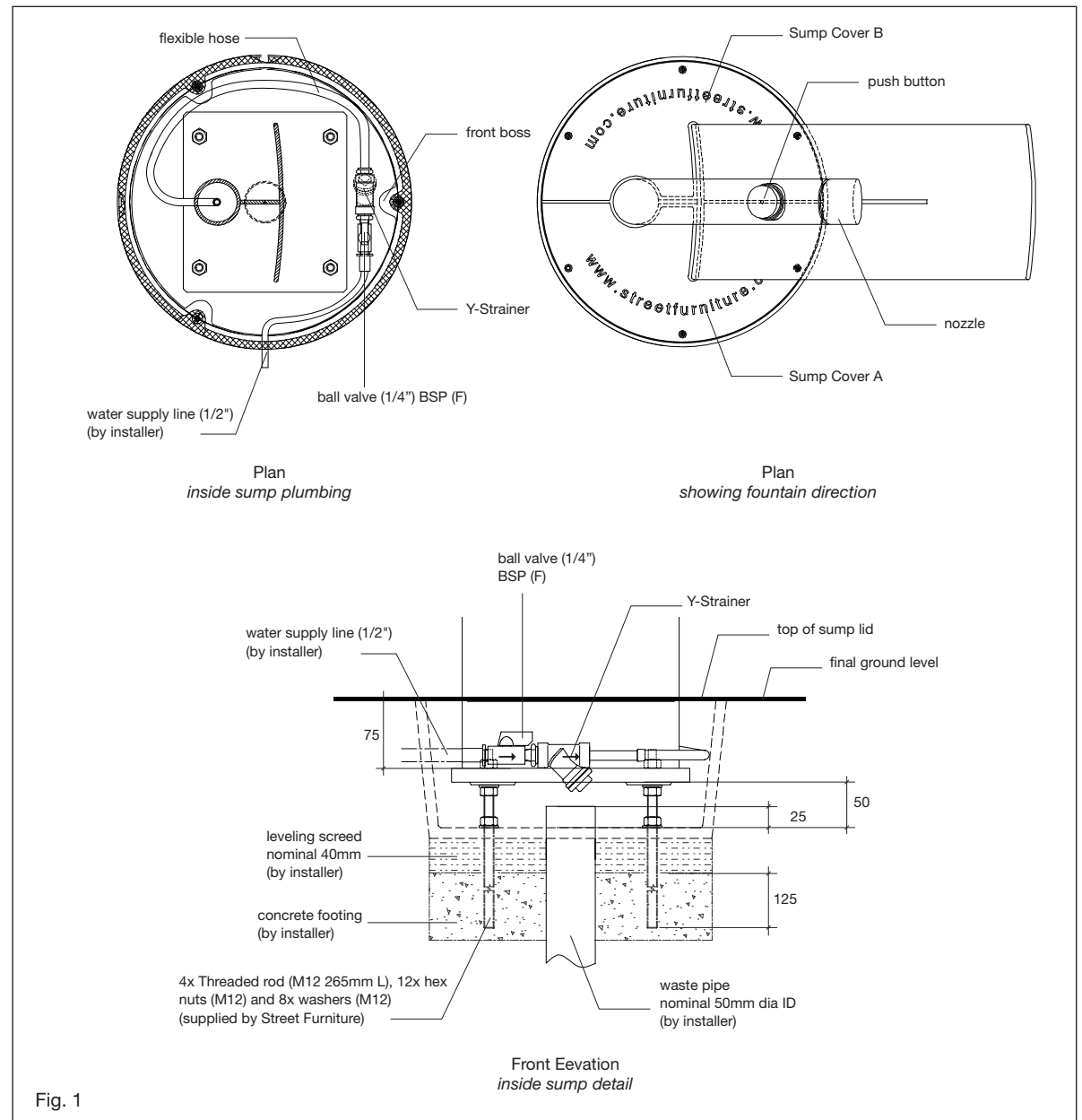
Arqua Station with Dog Bubbler

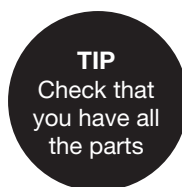
assembly and installation instructions

A. HOW TO ASSEMBLE AND INSTALL ARQUA FOUNTAIN (DF4)

Make sure you read and understand the installation diagram in **Fig. 1** and check your component list on the next page before starting the installation.

Important: All plumbing and drainage work should be done in accordance with local authority's regulations and installed by a licensed contractor.

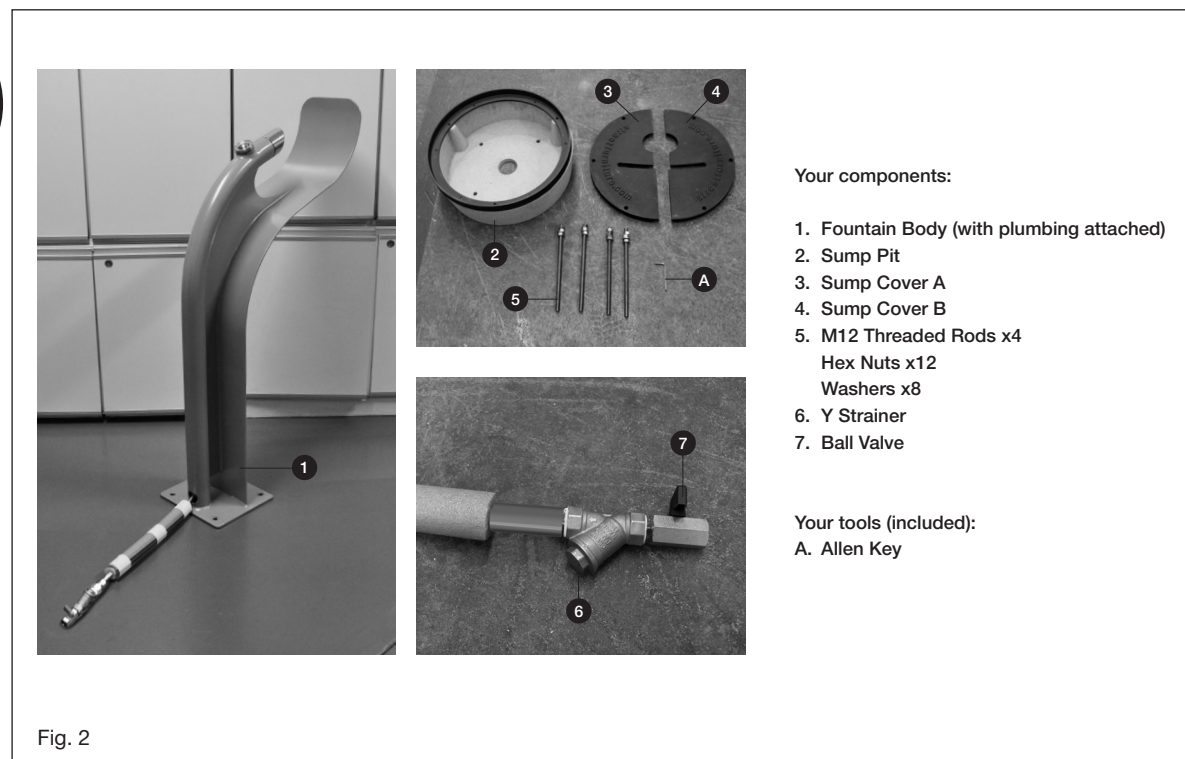




assembly and installation instructions

A. HOW TO ASSEMBLE AND INSTALL ARQUA FOUNTAIN (DF4) (continued)

There are two parts of installation: Sump Pit Installation and Fountain Body Installation. Sump Pit installation is the first part and will be the same for all the Arqua range. Please check that you have all the components and tools required before starting the installation **Fig. 2**.



assembly and installation instructions

A. HOW TO ASSEMBLE AND INSTALL ARQUA FOUNTAIN (DF4)

(continued)

PART 1 - Sump Pit Installation

Note: Ensure water supply has been turned off at the main source.

1. Pour concrete footing to 185mm below final ground level with waste pipe in place. The waste pipe needs to be located in the centre of the sump with the waste pipe protruding to at least final ground level and allow to set **Fig. 3**.
2. Slide pit down over the waste pipe and orient the pit to receive the fountain in the desired final position. Please note the front boss determines the direction the fountain will face **Fig. 4**. Carefully mark the 4 holes in the pit base, onto the concrete footing. Remove the pit and drill 4 x M14 holes to a depth of 125mm.
3. Using the supplied nuts, secure the 4 x M12 Threaded Rods to the sump pit **Fig. 5**.
4. Slide the pit down over the waste pipe and the threaded rods into the drilled holes. Ensure the 4 x M12 Threaded Rods are embedded 125mm into the concrete footing **Fig. 6**.
5. Once alignment is confirmed, use a suitable epoxy adhesive (as supplied by installer) and follow the manufacturer's instructions to secure the rods with pit in place. Allow it to set **Fig. 7**.
Note: Correct preparation and installation of the concrete footing is paramount.
6. Once set, undo the nuts from the threaded rods and remove the pit **Fig. 8**.
7. Cover the footing with a screeded bed of sand-cement to a nominal thickness of 40mm.



Fig. 3

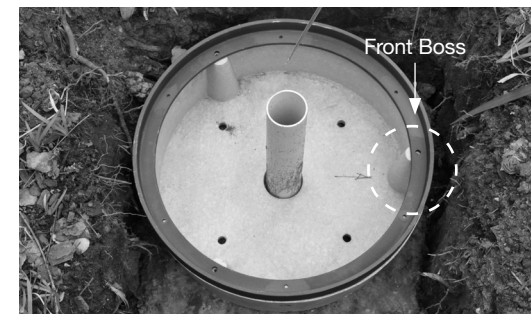


Fig. 4



Fig. 5



Fig. 6



Fig. 7

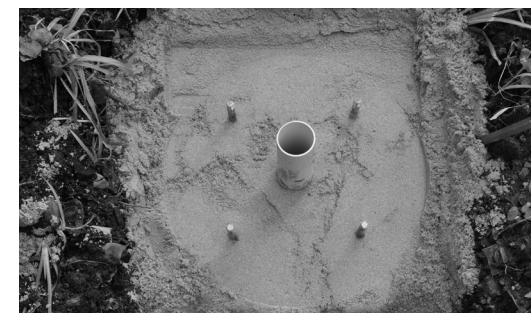


Fig. 8

assembly and installation instructions

A. HOW TO ASSEMBLE AND INSTALL **ARQUA FOUNTAIN (DF4)**

(continued)

PART 1 - Sump Pit Installation (continued)

8. Slide pit down over the waste pipe and threaded rods onto the leveling screed. Install pit horizontally and level with pavement. Adjust screeded sand-cement bed as needed to ensure that the top of the pit sits at pavement line and that the pit rim is level.
9. Mark the waste pipe at 25mm above the floor. Remove the pit and cut the waste pipe at the marked level. Slide pit back on and seal around the waste pipe. **Fig. 9.**
10. Using the supplied fixing nuts and washers, fasten the 4x M12 threaded rods to the bottom of the pit.
11. Choose one of the 3 water feed starter points on the sides of the pit and drill/knock through. Plumb the water supply line (1/2") through the hole and seal around the pipe **Fig. 10.**
13. Flush the supply line by turning on the water at the main source to remove any possible traces of particles or sediments from the water supply. Once completed, turn off the water supply at the main source.
14. Back fill around pit and finish pavement against pit rim edge.
15. Fasten cover plates until ready to receive the Arqua Fountain or Arqua Pole body. Installer on site to make openings in sump lid safe until the body is installed **Fig. 11.**

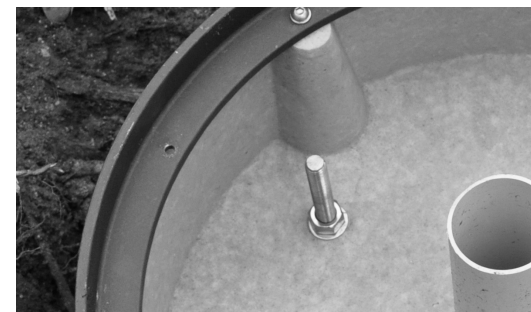
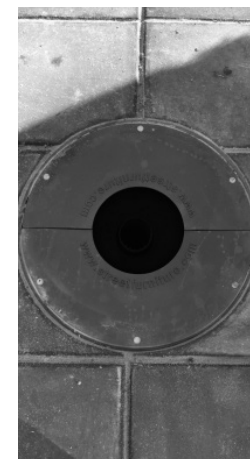


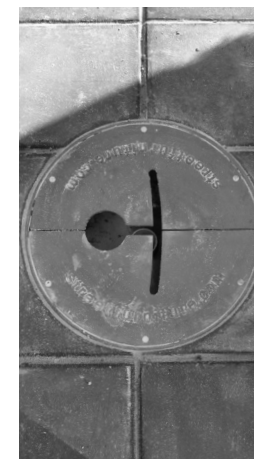
Fig. 9



Fig.10



Arqua Pole Cover



Arqua Fountain Cover

Fig.11

assembly and installation instructions

A. HOW TO ASSEMBLE AND INSTALL ARQUA FOUNTAIN (DF4) (continued)

PART 2 - Fountain Body Installation

1. Flush the supply line by turning on the water at the main source to remove any possible traces of particles or sediments from the water supply. Once completed, turn off the water supply at the main source.
2. Lower the fountain body onto the threaded rods. Ensure that the bottom of the small hole that's located just above the fountain's base plate sits in line with the pit rim. Adjust for level and height by raising and lowering the nuts supplied **Fig. 1**.
Note: Ensure the distance between the bottom of the pit and the Arqua Fountain baseplate is approximately 50mm.
3. Once the fountain is levelled, tighten the fixing nuts above the plate. Check the perpendicularity above the plate before completely tightening the fixing nuts.
4. Connect the fountain's flexible hose and plumbing to the main water supply. Turn on the water at the main source **Fig. 2**.
5. Test the water supply by turning on ball valve and pressing the push button. Allow time for water to flush out air pockets. Allow for the water through the pipework to flush out "new" taste.
6. After testing, lay both Sump Covers in place and fix them using the supplied screws. Clean body and sump (including the inside of the sump), the surroundings and leave neat and tidy **Fig. 3**.

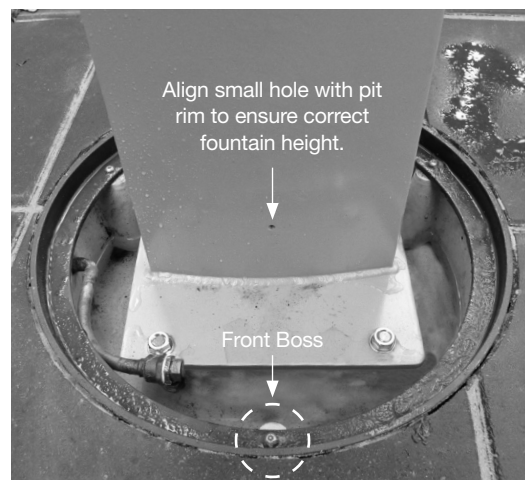


Fig. 1

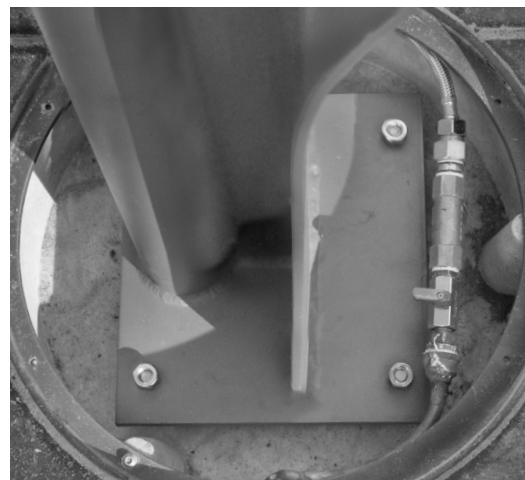


Fig. 2



Fig. 3

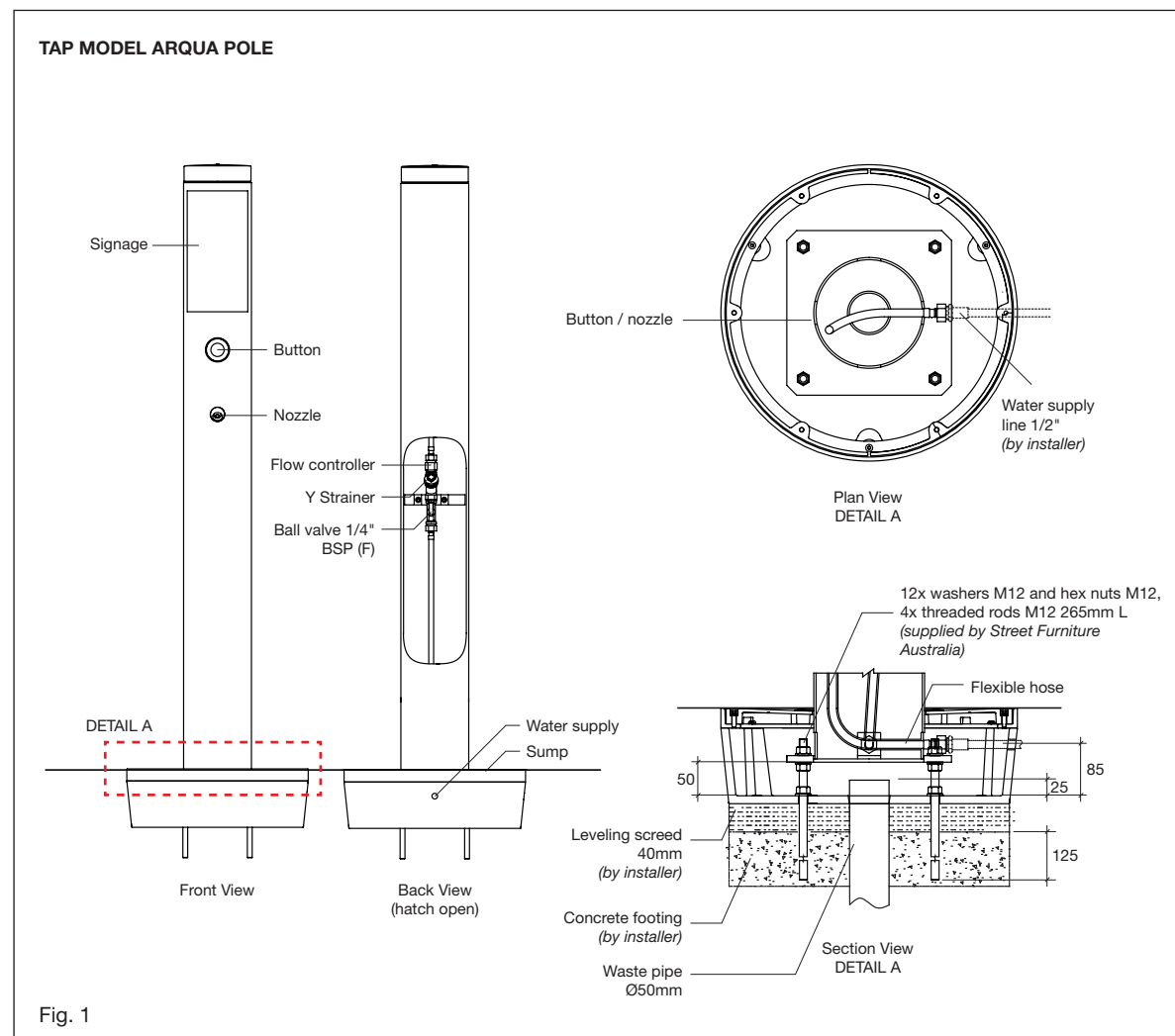
assembly and installation instructions

B. HOW TO ASSEMBLE AND INSTALL ARQUA POLE (DF7)

There are two models for Arqua Pole: Tap model and Filtered model. Refer to your selected product installation diagram to understand and check your component list on the next page before starting the installation.

Important: All plumbing and drainage work should be done in accordance with local authority's regulations and installed by a licensed contractor.

Fig. 1: Tap model Arqua Pole



FILTERED MODEL ARQUA POLE

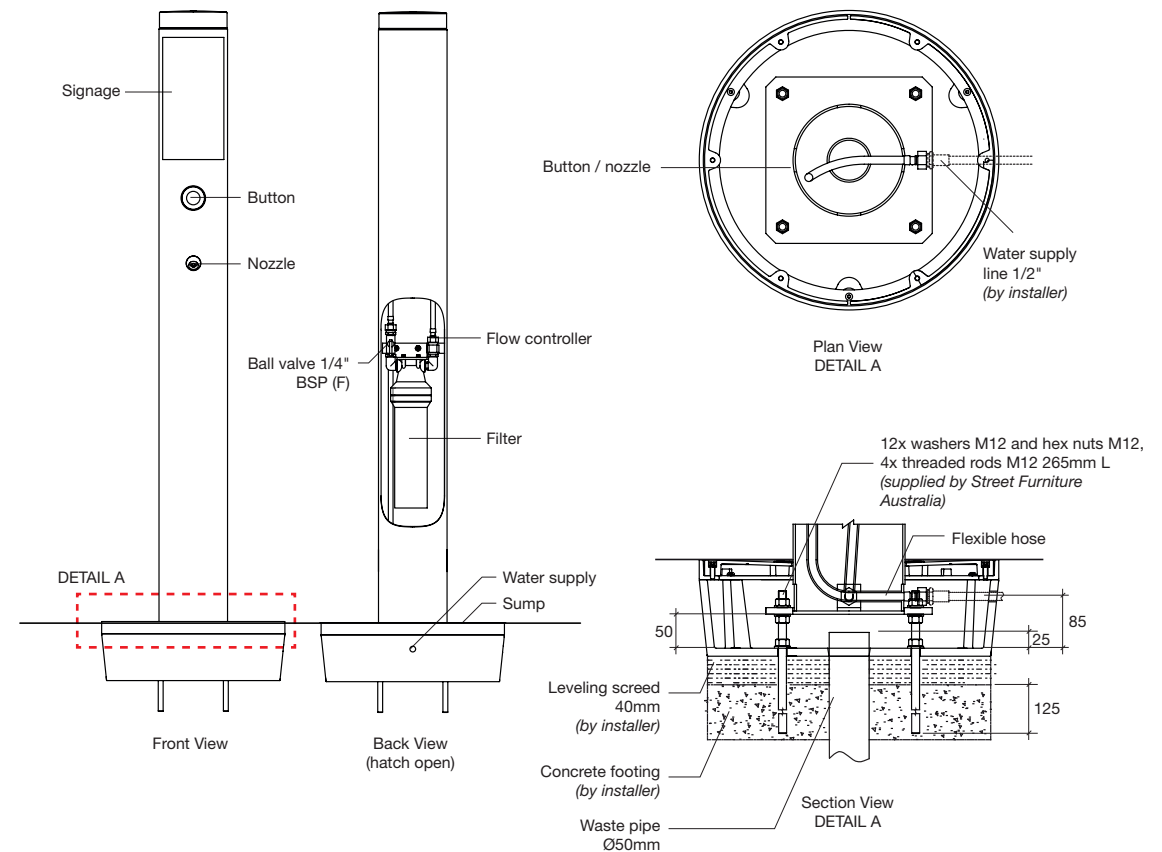


Fig. 2

assembly and installation instructions

B. HOW TO ASSEMBLE AND INSTALL ARQUA POLE (DF7) (continued)

Important: Filter requires cleaning at least once a year.

Fig. 2: Filtered model Arqua Pole

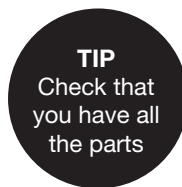
© Street Furniture Australia Pty Limited ABN 46 070 910 100

Australia 1800 027 799
United States +1 415 365 7186
International +61 2 8774 8888

Email info@streetfurniture.com
 N6 391 Park Road, Regents Park
 NSW 2143, Australia

Version 13 @ 26.02.21 MDP-04

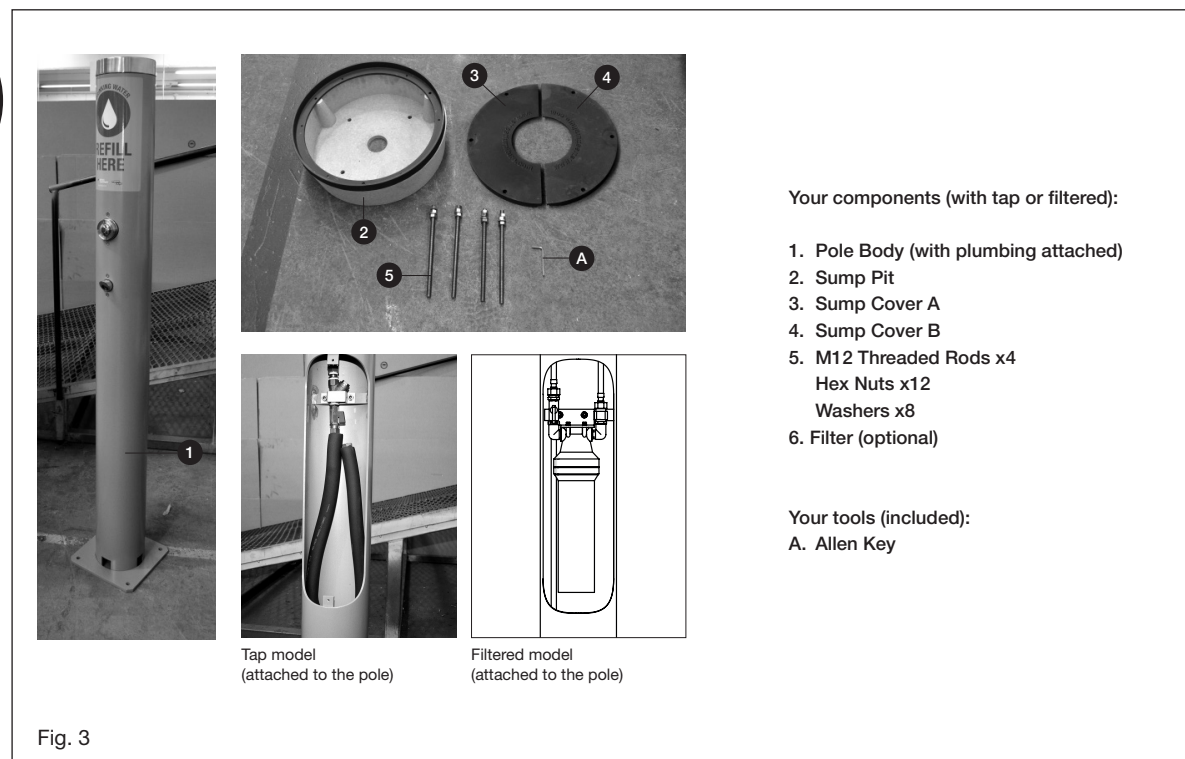
streetfurniture.com



assembly and installation instructions

B. HOW TO ASSEMBLE AND INSTALL ARQUA POLE (DF7) (continued)

There are two parts of installation: Sump Pit Installation and Pole Installation. Sump Pit installation is the first part and will be the same for all the Arqua range. Please check that you have all the components and tools required before starting the installation **Fig. 3**.



assembly and installation instructions

B. HOW TO ASSEMBLE AND INSTALL ARQUA POLE (DF7)

(continued)

PART 2 - Pole Body Installation

1. Flush the supply line by turning on the water at the main source to remove any possible traces of particles or sediments from the water supply. Once completed, turn off the water supply at the main source.

2. Lower the pole body onto the threaded rods. Ensure that the bottom of the small hole that's located between the hatch and the baseplate sits in line with the pit rim **Fig. 1**. Adjust for level and height by raising and lowering the nuts supplied. Check the perpendicularity of the pole.

Note: Ensure the distance between the bottom of the pit and the Arqua Fountain baseplate is approximately 50mm.

3. Once the pole is levelled, tighten the fixing nuts above the plate. Check the perpendicularity above the plate before completely tightening the fixing nuts.
4. Use the supplied allen key to remove the hatch plate of the Arqua Pole. Feed the end of the flexible hose through the appropriate hole at the bottom of the Arqua Pole **Fig. 2**.
5. Connect the Arqua pole's flexible hose to the water supply line. Turn on the water at the main source.
6. Test the water supply by turning on ball valve and pressing the push button. Allow time for water to flush out air pockets. Allow for the water through the pipework (and filters) to flush out "new" taste.
7. Replace the hatch on the Arqua Pole and lay both Sump Covers in place and fix them using supplied screws. Clean body and sump (including the inside of the sump), the surroundings and leave neat and tidy. **Fig. 3**.

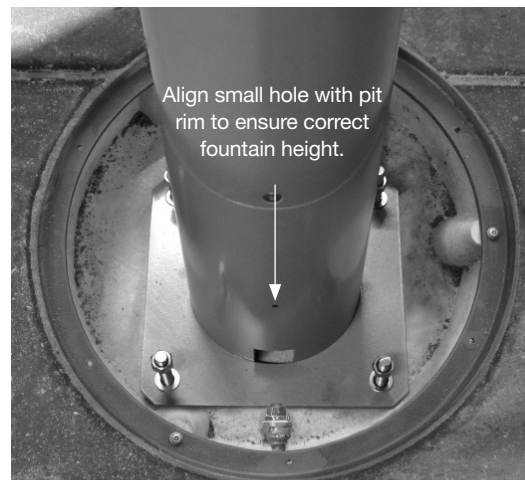


Fig. 1



Fig. 2



Fig. 3

TAP MODEL ARQUA POLE

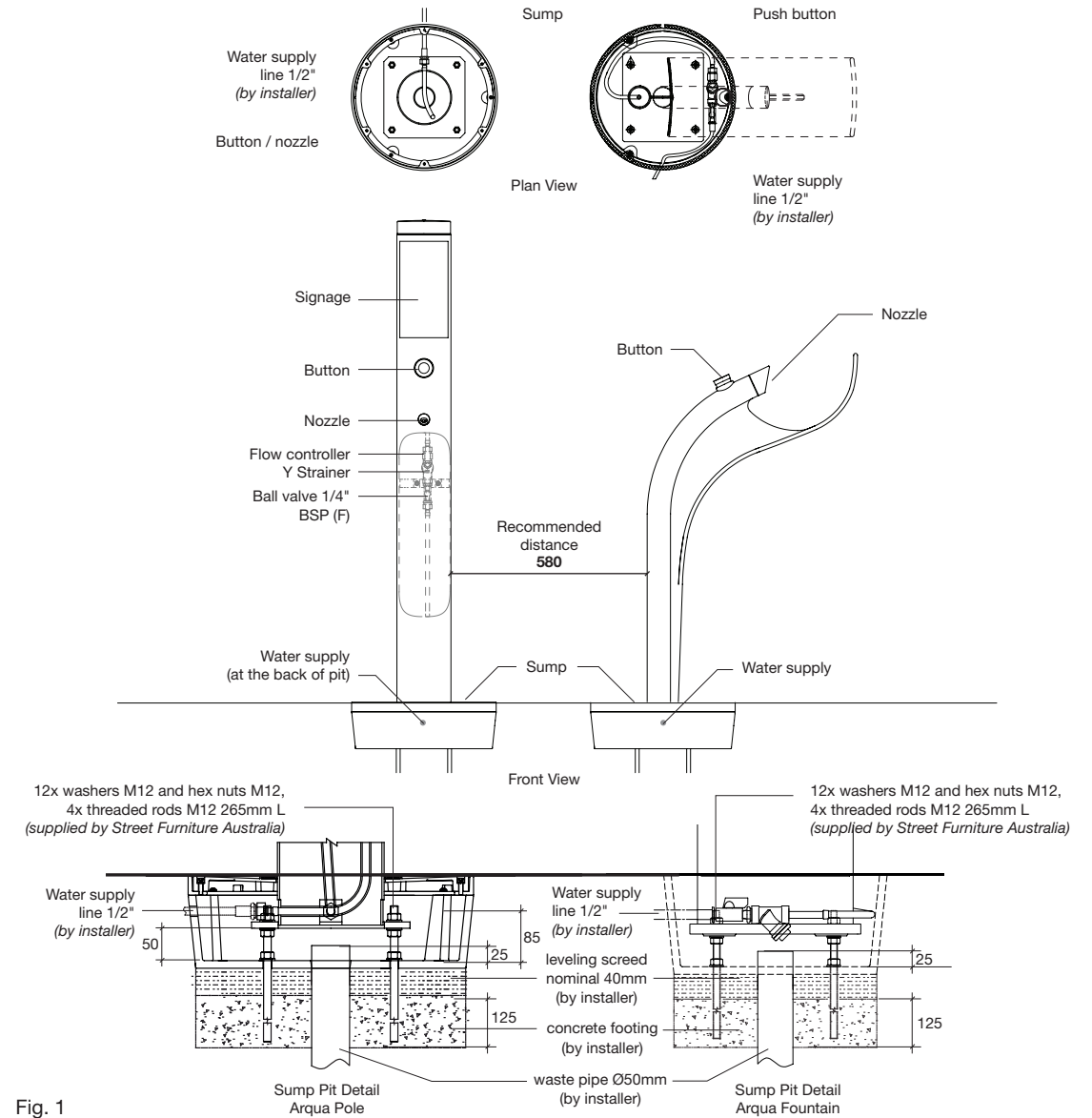


Fig. 1

assembly and installation instructions

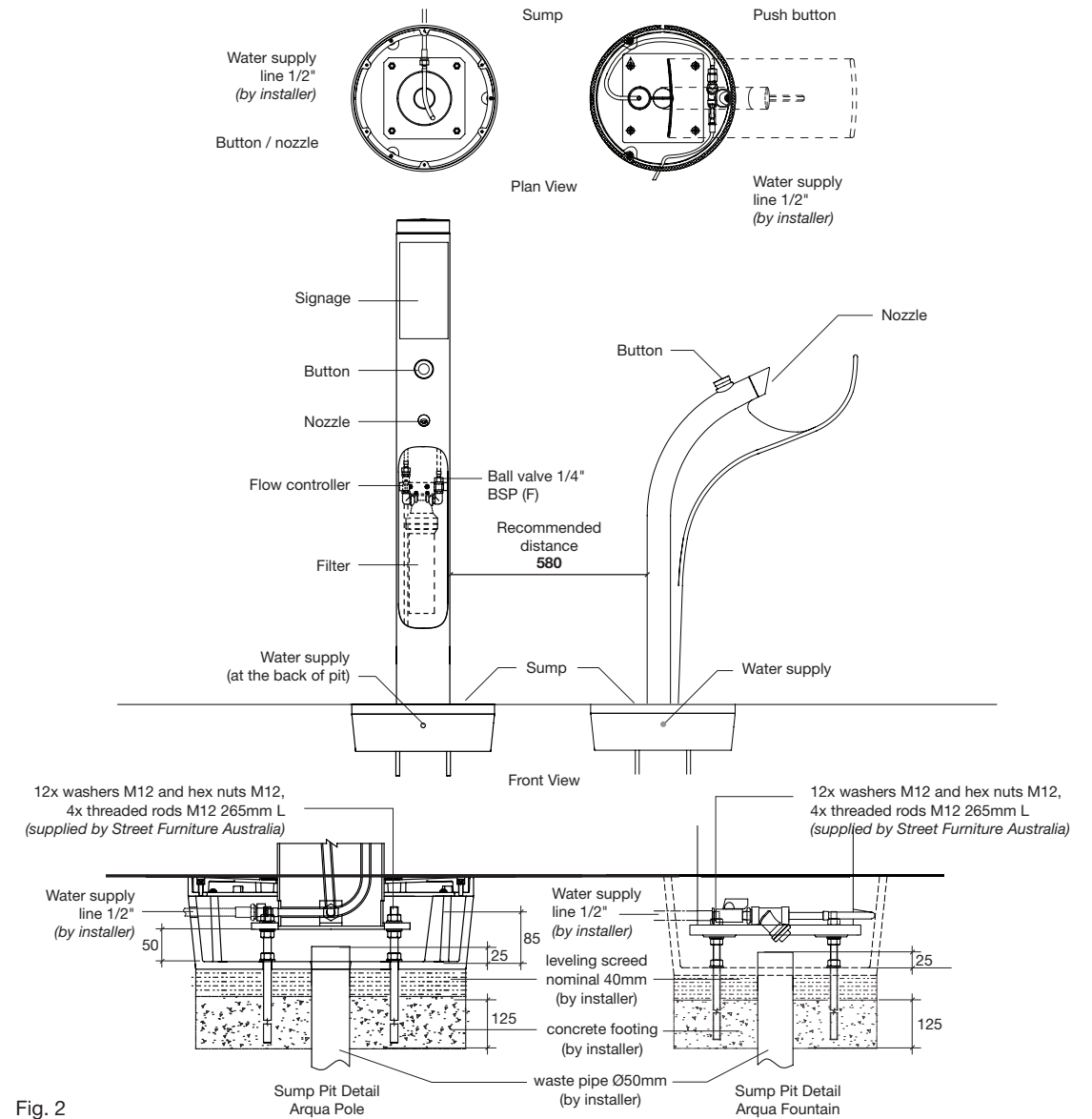
C. HOW TO ASSEMBLE AND INSTALL ARQUA STATION (DF4-DF7)

There are two models for Arqua Pole: Tap model and Filtered model. Refer to your selected product installation diagram to understand and check your component list on the next page before starting the installation.

Important: All plumbing and drainage work should be done in accordance with local authority's regulations and installed by a licensed contractor.

Fig. 1: Tap model Arqua Station

FILTER MODEL ARQUA POLE



assembly and installation instructions

C. HOW TO ASSEMBLE AND INSTALL ARQUA STATION (DF4-DF7) (continued)

Important: Filter requires cleaning at least once a year.

Fig. 2: Filtered model Arqua Station

TIP
Check that
you have all
the parts

assembly and installation instructions

C. HOW TO ASSEMBLE AND INSTALL ARQUA STATION (DF4-DF7) (continued)

There are three parts of installation: Sump Pit Installation, Fountain Body and Pole Installation. Sump Pit installation is the first part and will be the same for all the Arqua range. Please check that you have all the components and tools required before starting the installation **Fig. 3.**

ARQUA POLE

Your components (with tap or filtered):

1. Pole Body (with plumbing attached)
2. Sump Pit
3. Sump Cover A
4. Sump Cover B
5. M12 Threaded Rods x4
Hex Nuts x12
Washers x8

Your tools (included):

A. Allen Key

ARQUA FOUNTAIN

Your components:

1. Fountain Body (with plumbing attached)
2. Sump Pit
3. Sump Cover A
4. Sump Cover B
5. M12 Threaded Rods x4
Hex Nuts x12
Washers x8
6. Y Strainer
7. Ball Valve

Your tools (included):

A. Allen Key

Fig. 3

assembly and installation instructions

C. HOW TO ASSEMBLE AND INSTALL ARQUA STATION (DF4-DF7)

(continued)

PART 1 - Sump Pit Installation

Note: Ensure water supply has been turned off at the main source.

1. Pour concrete footing to 185mm below final ground level with waste pipe in place. The waste pipe needs to be located in the centre of the sump with the waste pipe protruding to at least final ground level and allow to set **Fig. 4**.
2. Slide pit down over the waste pipe and orient the pit to receive the fountain in the desired final position. Please note the front boss determines the direction the fountain will face **Fig. 5**. Carefully mark the 4 holes in the pit base, onto the concrete footing. Remove the pit and drill 4 x M14 holes to a depth of 125mm.
3. Using the supplied nuts, secure the 4 x M12 Threaded Rods to the sump pit **Fig. 6**.
4. Slide the pit down over the waste pipe and the threaded rods into the drilled holes. Ensure the 4 x M12 Threaded Rods are embedded 125mm into the concrete footing **Fig. 7**.
5. Once alignment is confirmed, use a suitable epoxy adhesive (as supplied by installer) and follow the manufacturer's instructions to secure the rods with pit in place. Allow it to set **Fig. 8**.
Note: Correct preparation and installation of the concrete footing is paramount.
6. Once set, undo the nuts from the threaded rods and remove the pit **Fig. 9**.
7. Cover the footing with a screeded bed of sand-cement to a nominal thickness of 40mm.



Fig. 4



Fig. 5



Fig. 6



Fig. 7



Fig. 8

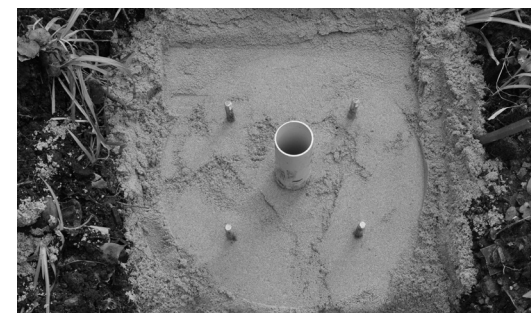


Fig. 9

assembly and installation instructions

C. HOW TO ASSEMBLE AND INSTALL ARQUA STATION (DF4-DF7)

(continued)

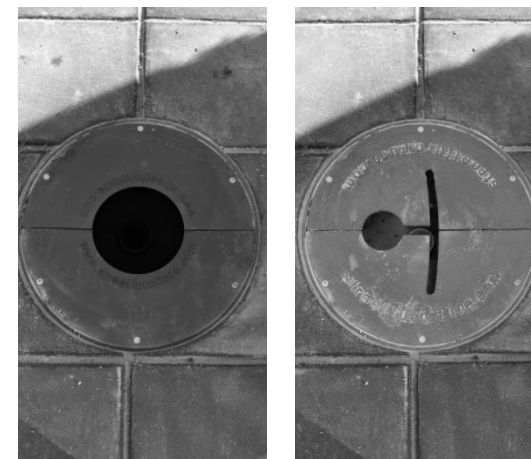
8. Slide pit down over the waste pipe and threaded rods onto the leveling screed. Install pit horizontally and level with pavement. Adjust screeded sand-cement bed as needed to ensure that the top of the pit sits at pavement line and that the pit rim is level.
9. Mark the waste pipe at 25mm above the floor. Remove the pit and cut the waste pipe at the marked level. Slide pit back on and seal around the waste pipe. **Fig. 10.**
10. Using the supplied fixing nuts and washers, fasten the 4x M12 threaded rods to the bottom of the pit.
11. Choose one of the 3 water feed starter points on the sides of the pit and drill/knock through. Plumb the water supply line (1/2") through the hole and seal around the pipe **Fig. 11.**
13. Flush the supply line by turning on the water at the main source to remove any possible traces of particles or sediments from the water supply. Once completed, turn off the water supply at the main source.
14. Back fill around pit and finish pavement against pit rim edge.
15. Fasten cover plates until ready to receive the Arqua Fountain and Arqua Pole. Installer on site to make openings in sump lid safe until the Arqua Fountain is installed **Fig. 12.**



Fig. 10



Fig.11



Arqua Pole Cover

Arqua Fountain Cover

Fig.12

assembly and installation instructions

C. HOW TO ASSEMBLE AND INSTALL ARQUA STATION (DF4-DF7) (continued)

PART 2 - Fountain Body Installation

1. Flush the supply line by turning on the water at the main source to remove any possible traces of particles or sediments from the water supply. Once completed, turn off the water supply at the main source.
2. Lower the fountain body onto the threaded rods. Ensure that the bottom of the small hole that's located just above the fountain's base plate sits in line with the pit rim. Adjust for level and height by raising and lowering the nuts supplied **Fig. 1**.
Note: Ensure the distance between the bottom of the pit and the Arqua Fountain baseplate is approximately 50mm.
3. Once the fountain is levelled, tighten the fixing nuts above the plate. Check the perpendicularity above the plate before completely tightening the fixing nuts.
4. Connect the fountain's flexible hose and plumbing to the main water supply. Turn on the water at the main source **Fig. 2**.
5. Test the water supply by turning on ball valve and pressing the push button. Allow time for water to flush out air pockets. Allow for the water through the pipework to flush out "new" taste.
6. After testing, lay both Sump Covers in place and fix them using the supplied screws. Clean body and sump (including the inside of the sump), the surroundings and leave neat and tidy **Fig. 3**.

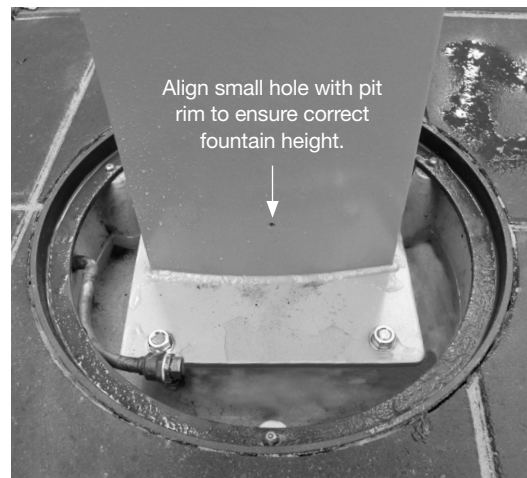


Fig. 1

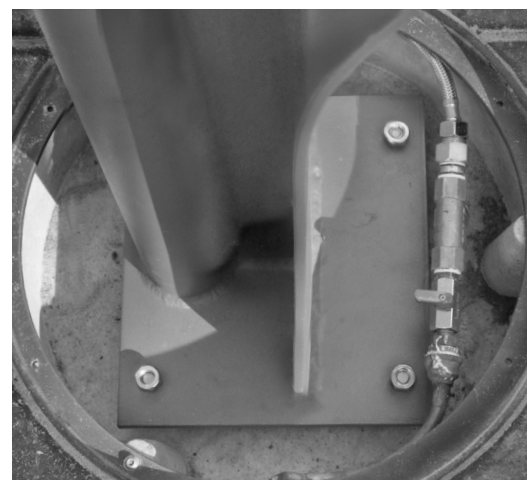


Fig. 2



Fig. 3

assembly and installation instructions

C. HOW TO ASSEMBLE AND INSTALL ARQUA STATION (DF4-DF7)

(continued)

PART 3 - Pole Body Installation

1. Flush the supply line by turning on the water at the main source to remove any possible traces of particles or sediments from the water supply. Once completed, turn off the water supply at the main source.

2. Lower the pole body onto the threaded rods. Ensure that the bottom of the small hole that's located between the hatch and the baseplate sits in line with the pit rim **Fig. 1**. Adjust for level and height by raising and lowering the nuts supplied. Check the perpendicularity of the pole.

Note: Ensure the distance between the bottom of the pit and the Arqua Fountain baseplate is approximately 50mm.

3. Once the pole is levelled, tighten the fixing nuts above the plate. Check the perpendicularity above the plate before completely tightening the fixing nuts.
4. Use the supplied allen key to remove the hatch plate of the Arqua Pole. Feed the end of the flexible hose through the appropriate hole at the bottom of the Arqua Pole **Fig. 2**.
5. Connect the Arqua pole's flexible hose to the water supply line. Turn on the water at the main source.
6. Test the water supply by turning on ball valve and pressing the push button. Allow time for water to flush out air pockets. Allow for the water through the pipework (and filters) to flush out "new" taste.
7. Replace the hatch on the Arqua Pole and lay both Sump Covers in place and fix them using supplied screws. Clean body and sump (including the inside of the sump), the surroundings and leave neat and tidy. **Fig. 3**.

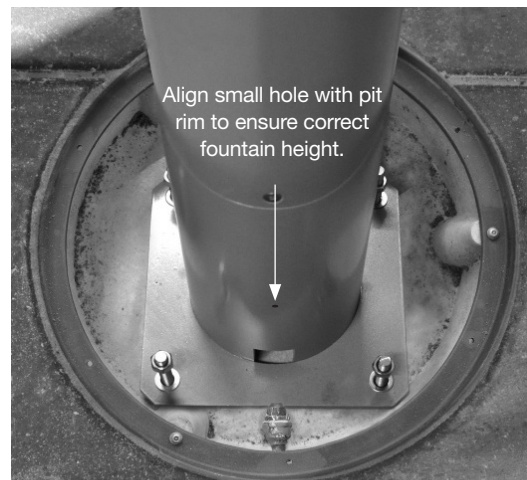


Fig. 1

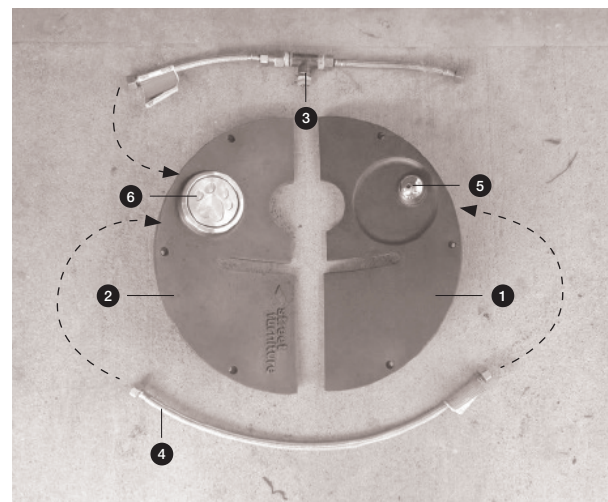


Fig. 2



Fig. 3

TIP
Check that
you have all
the parts



Your components:

1. Sump Cover with Valve
2. Sump Cover with Paw Button
3. T Connector Hose Assembly
4. 600mm Hose
5. Valve
6. Paw Button

Fig. 1

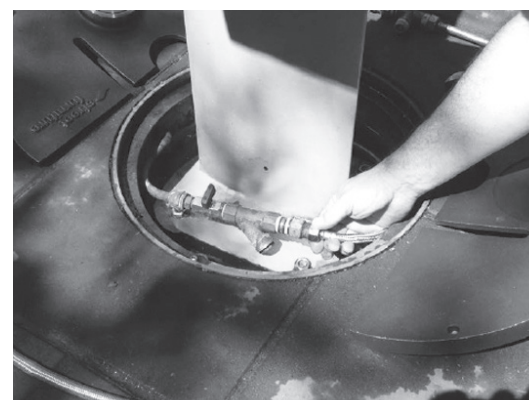


Fig. 2

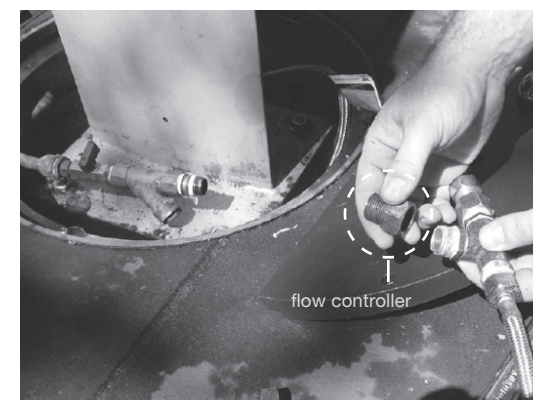


Fig. 3

assembly and installation instructions

D. HOW TO RETROFIT **DOG BUBBLER KIT (DB-KIT)**

1. Please check that you have all the components **Fig. 1**.
2. Turn off tap and remove hose **Fig. 2**
3. Remove flow controller fitting and install it to the T Connector **Fig. 3**.

© Street Furniture Australia Pty Limited ABN 46 070 910 100

Australia 1800 027 799
United States +1 415 365 7186
International +61 2 8774 8888

Email info@streetfurniture.com
N6 391 Park Road, Regents Park
NSW 2143, Australia

Version 13 @ 26.02.21 MDP-04

streetfurniture.com

18

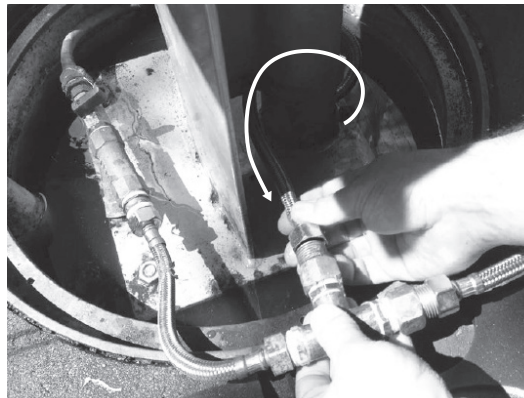


Fig. 4

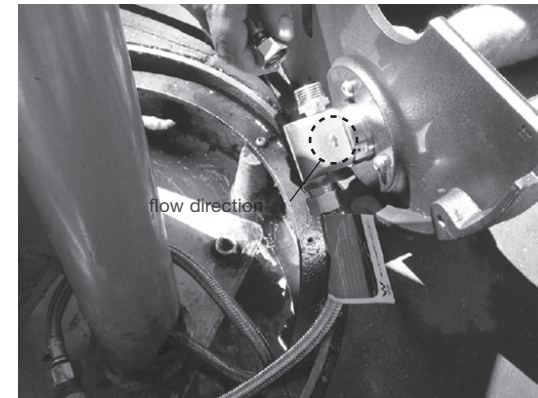


Fig. 5



Fig. 6

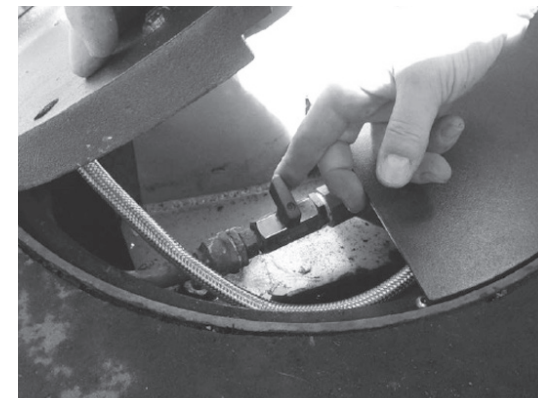


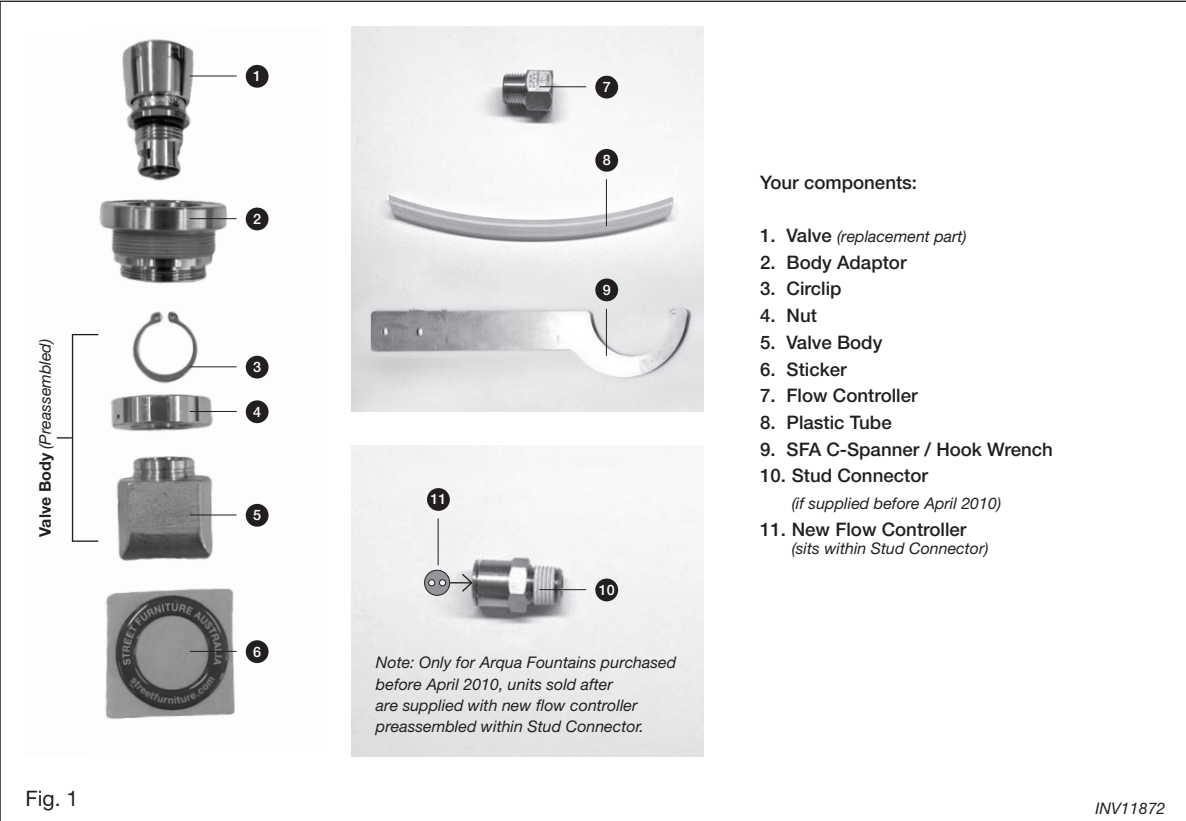
Fig. 7

assembly and installation instructions

D. HOW TO RETROFIT **DOG BUBBLER KIT (DB-KIT)** *(continued)*

4. Loop existing fountain hose around column and through gap, then connect the hose to flow controller on the T Connector. Also connect the hose from the T Connector to the fountain plumbing **Fig. 4**
5. Connect the other hose from T Connector (with label) to the paw button and connect the 600mm hose to the other part of the paw button (follow the flow direction) **Fig. 5**.
6. Position sump plate with paw button, connect the other side of 600mm hose to the valve on the other sump cover **Fig. 6**.
7. Turn on tap and position the last sump cover with valve in place **Fig. 7**.

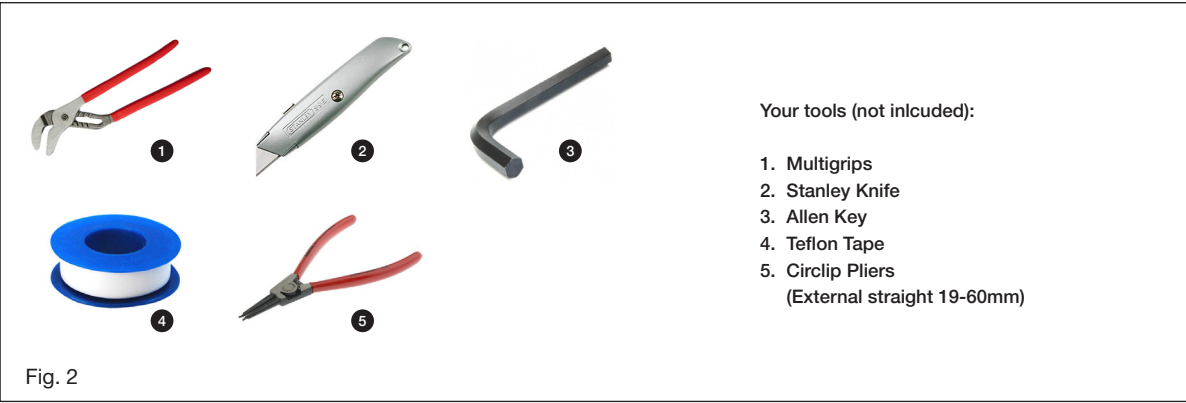
TIP
Check that
you have all
the parts



assembly and installation instructions

E. HOW TO RETROFIT DF4 VALVE KIT

1. Please check that you have all the components **Fig.1.**
2. Make sure that you have the tools required **Fig. 2.**



assembly and installation instructions

E. HOW TO RETROFIT DF4 VALVE KIT (continued)

3. Turn off the water supply. Remove sump covers at the base and locate the isolating ball valve. Detach the fountain hose from the Y strainer. **Fig. 3.**
4. Remove water nozzle. If fitted with an internal grub screw – insert an allen key into the hole to remove the spout **Fig. 4.** If your fountain has a countersunk security screw – remove screw. Ease the stainless steel spout out of the fountain.
Note: The plastic hose remains in place once the nozzle is removed.
5. Use C-spanner to unscrew body valve adaptor around valve assembly. **Fig. 5.**
6. Draw the valve assembly upward and separate the valve adaptor from the valve by gripping the knurled brass swivel ring on the valve and unscrewing the valve adaptor **Fig. 6.**
Note: if you have a black plastic flange adaptor you will need to remove it completely; it might break if corroded.
7. Lower the valve back into the fountain body whilst firmly holding on to the plastic hose and gently pull the plastic hose and the old valve body forward from the fountain body **Fig. 7.**
Note: When pulling the old valve body out of the fountain, please ensure the fountain hose is free at the base of the fountain to allow the hose to feed into the fountain as the old valve is being pulled out.
8. Once the valve body is approximately 20cm past the fountain body, disconnect the old valve from the fountain hose.
Note: Ensure the fountain hose is secured to avoid it falling back down inside the fountain.
9. Unscrew the stud connector from the old valve body and set it to one side **Fig. 8.** Remove the plastic tube and dispose of it. If the Arqua Fountain DF4 has been purchased before April 2010 and contains a “nut and olive,” please dispose of it responsibly.
10. Apply teflon tape to the thread of the 1/2” to 1/4” BSP adaptor and screw it into the lower hole of the new valve body **Fig. 8.**
11. Screw the stud connector on to the upper hole of the new valve body.
12. Unscrew the 1/2” to 1/4” BSP adaptor from the old valve.



Fig. 3



Fig. 4



Fig. 5



Fig. 6



Fig. 7

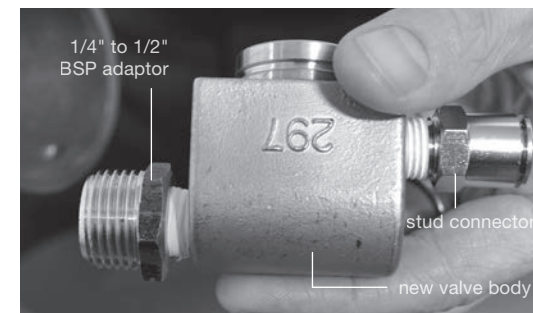


Fig. 8



Fig. 9



Fig. 10

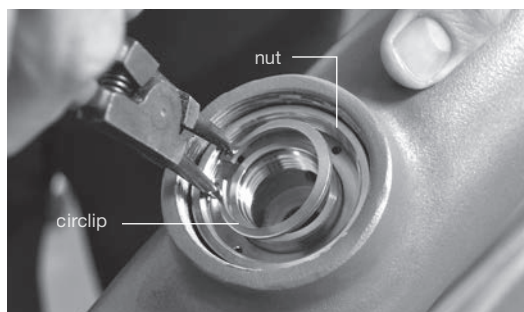


Fig. 11



Fig. 12



Fig. 13



Fig. 14

assembly and installation instructions

E. HOW TO RETROFIT **DF4 VALVE KIT** (continued)

13. Attach the new valve body to the hose and push it back into the fountain body **Fig. 9**.
14. Draw the valve body up and in to the top body hole of the fountain body. From above the top body hole, place the nut on to the valve body **Fig. 10**.
15. Use your circlip pliers (external straight 19 –60mm, not provided) to place the circlip over the nut to lock it in place **Fig. 11**.
16. Screw the new valve assembly onto the valve body. Use multi grips to tighten **Fig. 12**.
WARNING: DO NOT unscrew the top part of the valve. This will damage the valve and will not be covered under warranty.
17. Screw the new body adaptor onto the valve body **Fig. 13**.
Note: Ensure the body adaptor is screwed all the way in and that there is no gap between the valve body and the nut.
18. Once secure, screw the body assembly to the body of the fountain. Use the c-spanner provided to tighten **Fig. 14**.
WARNING: Do not use multi grips as this will damage the valve assembly and will not be covered under warranty.

assembly and installation instructions

E. HOW TO RETROFIT DF4 VALVE KIT (continued)

13. Place sticker on top of the adapter, aligning carefully within provided groove **Fig. 15**.
14. Replace the nozzle back on to the fountain and tighten using an allen key. Neatly cut off the protruding excess tube from the nozzle and dispose of it. **Fig. 16**.
15. Install the flow controller.
IMPORTANT: The new valve system must be fitted with the supplied flow controller. Failure to install it will void the warranty.
16. Screw in the new flow controller to the adaptor on the Y strainer and connect the fountain hose to the flow controller and turn on the water supply **Fig. 17**.
17. Check for leaks.
18. Replace the sump covers.



Fig. 15



Fig. 16

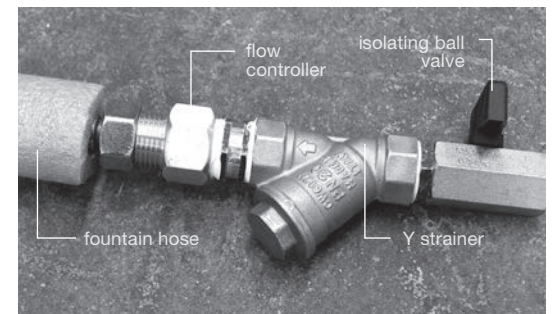


Fig. 17

TIP
Check that
you have all
the parts

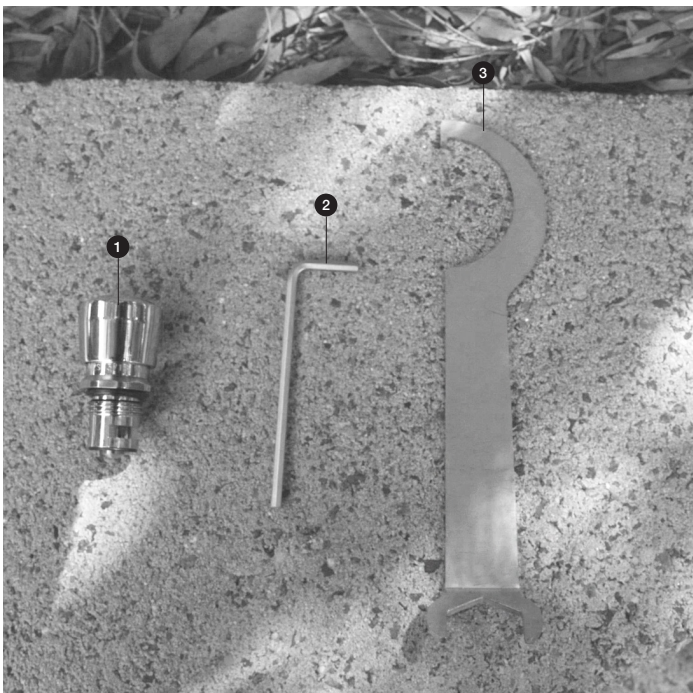


Fig. 1

INV11871

Your components:

1. Valve Button (replacement part)
2. Allen Key
3. SFA C-Spanner / Hook Wrench

assembly and installation instructions

F. HOW TO CHANGE A DF4 PUSH BUTTON VALVE

1. Please check that you have all the components **Fig.1.**
2. Make sure that you have the tools required **Fig. 2.**



Scan QR code to view video on
how to change the Arqua valve.



Fig. 2

Your tools (not included):

1. Multigrips (optional)
2. Allen Key

assembly and installation instructions

F. HOW TO CHANGE A DF4 PUSH BUTTON VALVE (continued)

3. Turn off the water supply. Remove sump covers at the base and locate the ball valve. **Fig. 3.**
4. Test that the water is shut off before next step.
5. Remove water nozzle. If fitted with an internal grub screw – insert an allen key into the hole to remove the spout **Fig. 4.** If your fountain has a countersunk security screw –remove screw. Ease the stainless steel spout out of the fountain.
Note: The plastic hose remains in place once the nozzle is removed.
6. Use hook wrench to unscrew the flange adaptor (valve assembly) from the fountain body. Once loosen put your hand through the water nozzle opening to draw the valve assembly upward to help remove the flange adaptor **Fig. 5.**
7. Wedge a screwdriver in the gap down the side to stop the nut from moving so you can unscrew the flange adaptor from the nut (part of the valve body). **Fig. 6.**
8. Use the other end of the hook wrench (c-spanner) to remove the valve button **Fig. 7.**
9. Screw in the new replacement valve button and tighten with the hook wrench or a pair of multigrip **Fig. 8.**

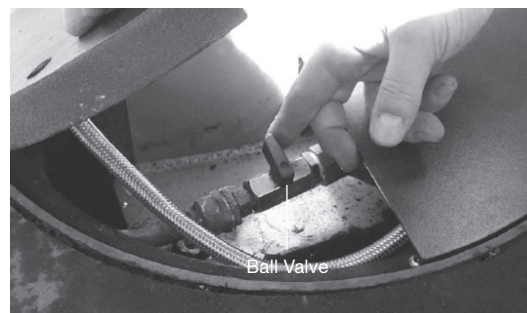


Fig. 3



Fig. 4



Fig. 5



Fig. 6

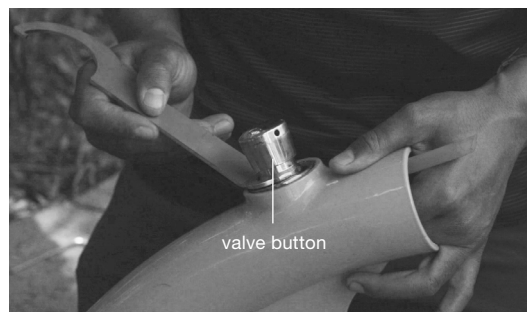


Fig. 7



Fig. 8

assembly and installation instructions

F. HOW TO CHANGE A **DF4 PUSH BUTTON VALVE** *(continued)*

10. Screw the flange adaptor back into the nut first then into the fountain body and tighten up with the hook wrench.
11. Put the water nozzle back, to help alignment of the plastic tube and spout use the allen key through the hole. Then secure with the screw removed from step 5. **Fig. 9.**
12. Turn on the water supply. Secure the sump covers.

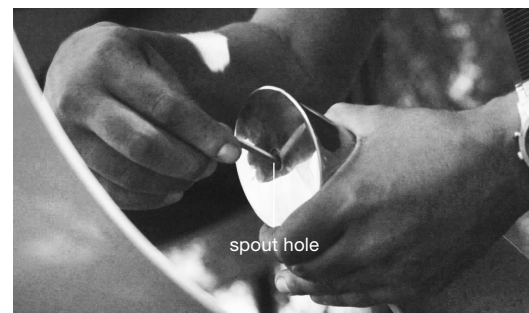


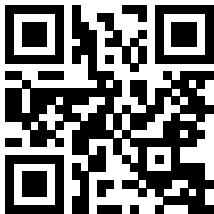
Fig. 8



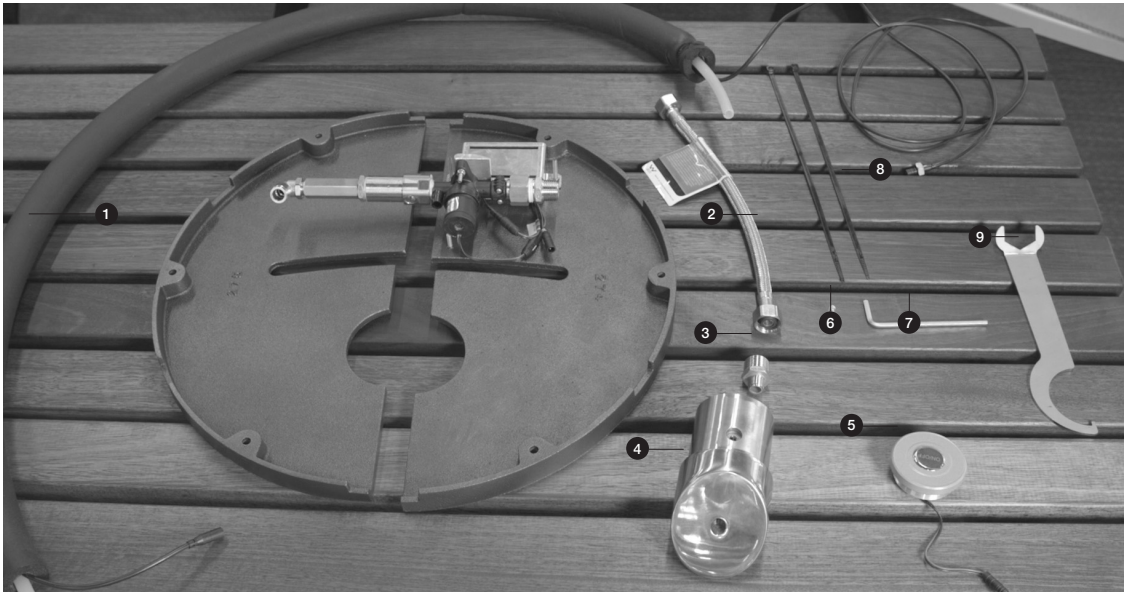
assembly and installation instructions

G. HOW TO INSTALL TOUCH SENSOR BUTTON ON ARQUA FOUNTAIN DF4

1. Please check that you have all the components and tools required Fig.1.



Scan QR code to view video on how to install the Arqua touch sensor button.



Your components and tools:

- | | |
|--|-----------------------------------|
| 1. Beverage Pipe and Extension Lead (Inside an insulated pipe) | 6. Security Grub Screw (existing) |
| 2. Flexihose | 7. Allen Key (not included) |
| 3. Adaptor | 8. Cable Ties (not included) |
| 4. New Spout | 9. Hook Wrench (not included) |
| 5. Touch Sensor Button with Flange | |

Fig. 1



Fig. 2



Fig. 3



Fig. 4



Fig. 5



Fig. 6



Fig. 7

assembly and installation instructions

G. HOW TO INSTALL TOUCH SENSOR BUTTON ON ARQUA FOUNTAIN DF4 *(continued)*

2. Undo all the screws in the lid **Fig. 2**.
3. Remove both lids from the sump **Fig. 3**.
4. Turn off the water supply **Fig. 4**.
5. Unscrew the old adaptor **Fig. 5**.
6. Unscrew the old security grub screw **Fig. 6**.
7. Take off the old spout **Fig. 7**.

assembly and installation instructions

G. HOW TO INSTALL TOUCH SENSOR BUTTON ON ARQUA FOUNTAIN DF4 *(continued)*

8. Loosen the old button with the hook wrench, then unscrew it **Fig. 8**.
9. Wedge a screwdriver in the gap down the side of the button to help remove it **Fig. 9**.
10. Lift the push valve. Use the small end of the hook to remove it **Fig. 10**.
11. Pull out the old beverage pipe through the top of the fountain. Make sure the flexihose is clear at the bottom **Fig. 11**.
12. Take the new beverage pipe. Attach a nut onto the end of the extension lead (**Fig. 12**) to help it drop through the body of the fountain and remove the nut afterward.
13. Insert the insulated beverage pipe down the fountain body **Fig. 13**.



Fig. 8



Fig. 9



Fig. 10



Fig. 11



Fig. 12



Fig. 13



Fig. 14



Fig. 15



Fig. 16



Fig. 17



Fig. 18



Fig. 19

assembly and installation instructions

G. HOW TO INSTALL TOUCH SENSOR BUTTON ON ARQUA FOUNTAIN DF4 *(continued)*

14. Take the new touch sensor button **Fig. 14**.
15. Screw it in place **Fig. 15**.
16. Use the hook wrench to fish out the button lead **Fig 16**.
17. Connect the two leads **Fig. 17**.
18. Push the connected leads into the fountain body **Fig. 18**.
19. Fit the new spout onto the beverage pipe. Attach the spout to the body **Fig. 19**.



Fig. 20

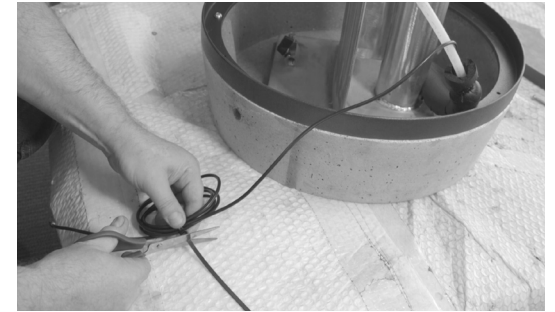


Fig. 21

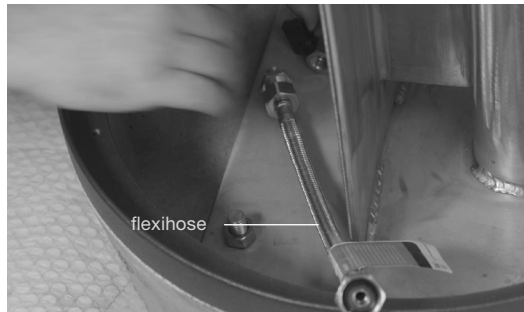


Fig. 22

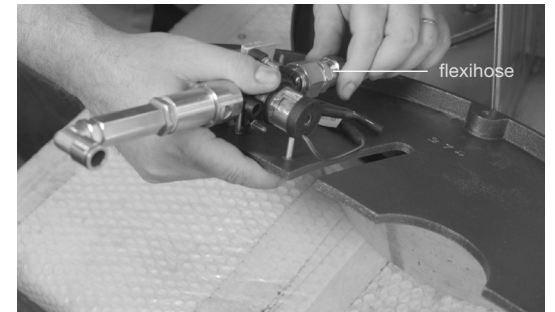


Fig. 23

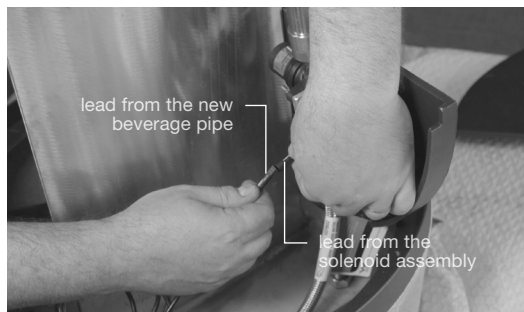


Fig. 24



Fig. 25

assembly and installation instructions

G. HOW TO INSTALL TOUCH SENSOR BUTTON ON ARQUA FOUNTAIN DF4 *(continued)*

20. Replace the security grub screw **Fig. 20**.
21. Coil the extension lead and secure with a cable tie and trim the tie **Fig. 21**.
22. Screw the new flexihose to the water supply **Fig. 22**.
23. Attach the other end of the flexihose to the solenoid assembly **Fig. 23**.
24. Connect the two leads at the base of the fountain **Fig. 24**.
25. Replace the lid back to the sump **Fig. 25**.

assembly and installation instructions

G. HOW TO INSTALL TOUCH SENSOR BUTTON ON ARQUA FOUNTAIN DF4 *(continued)*

- 26. Connect the beverage pipe to the solenoid assembly **Fig. 26**.
- 27. Turn the water supply back on **Fig. 27**.
- 28. Replace the other lid back to the sump **Fig. 28**.
- 29. Fix in all the screws with an Allen Key **Fig. 29**.



Fig. 26



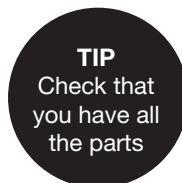
Fig. 27



Fig. 28



Fig. 29



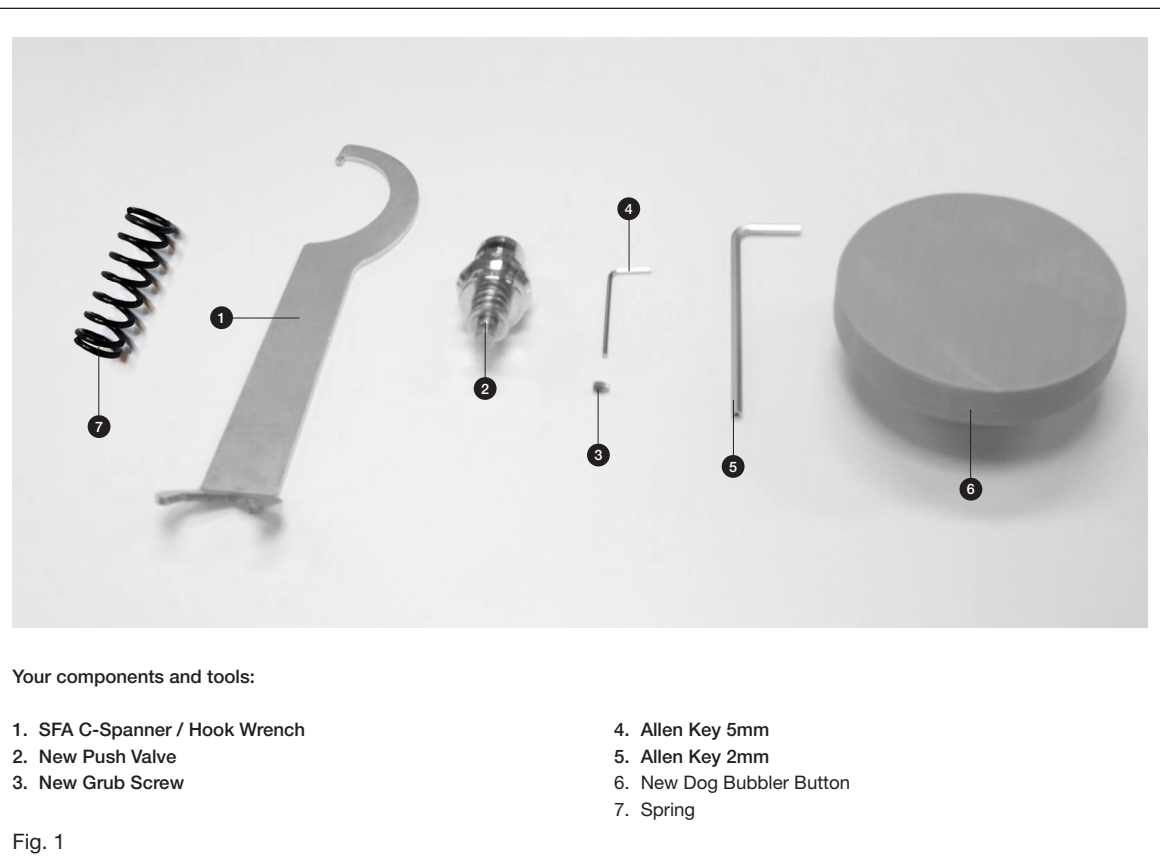
assembly and installation instructions

H. HOW TO CHANGE DOG BUBBLER PUSH BUTTON AND VALVE ON ARQUA FOUNTAIN DF4

1. Please check that you have all the components and tools required Fig.1.



Scan QR code to view video on how to change the Arqua Dog Bubbler push button and valve.



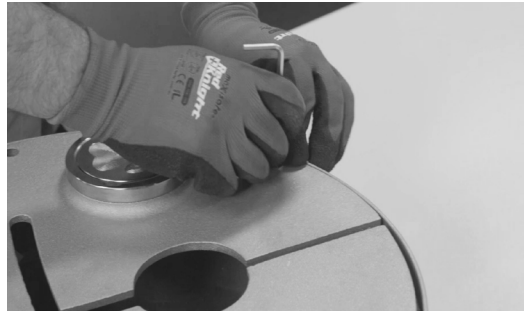


Fig. 2



Fig. 3



Fig. 4

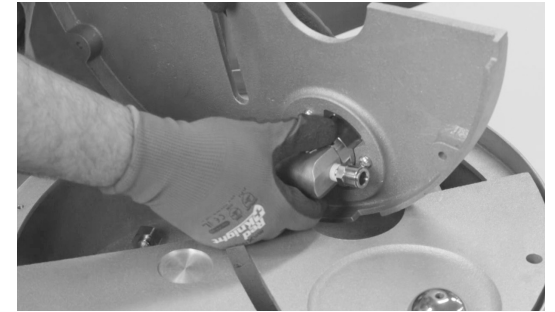


Fig. 5

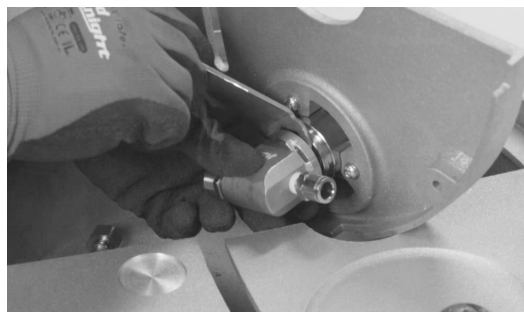


Fig. 6



Fig. 7

assembly and installation instructions

H. HOW TO CHANGE DOG BUBBLER PUSH BUTTON AND VALVE ON ARQUA FOUNTAIN DF4 *(continued)*

2. Undo all the screws in the lid **Fig. 2.**
3. Lift the lid. Make sure the water supply is switched off. **Fig. 3.**
4. Disconnect the water supply and hose **Fig. 4.**
5. Unscrew the nut **Fig. 5.**
6. Use the spanner to undo the valve **Fig. 6.**
7. Remove the valve body **Fig. 7.**



Fig. 8



Fig. 9



Fig. 10



Fig. 11



Fig. 12



Fig. 13

assembly and installation instructions

H. HOW TO CHANGE DOG BUBBLER PUSH BUTTON AND VALVE ON ARQUA FOUNTAIN DF4 *(continued)*

8. Remove the valve and the button **Fig. 8**.
9. Remove the grub screw from the old button and valve **Fig. 9** Keep hold of the screw, you will use it for the new button.
10. Remove the valve from the old button **Fig. 10**.
11. Assemble the new valve and new push button **Fig. 11**.
12. Screw in the grub screws **Fig. 12**. There are now two in the new button. One is provided, the other reused from the old button. Ensure to use both grub screws.
13. Place the new button and valve into the lid **Fig. 13**.

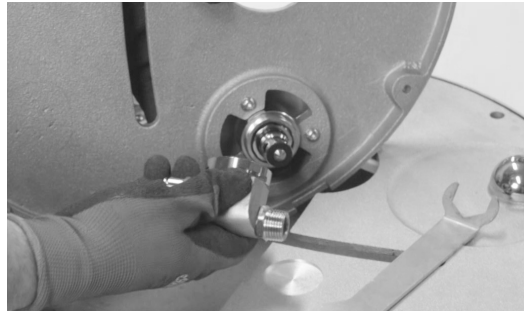


Fig. 14

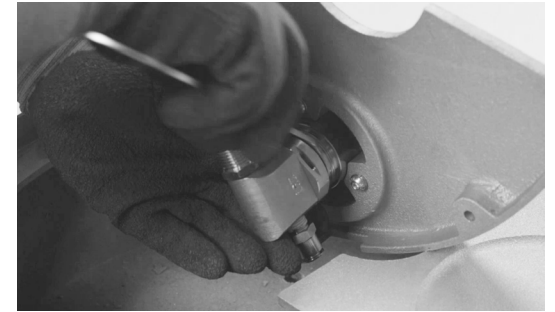


Fig. 15

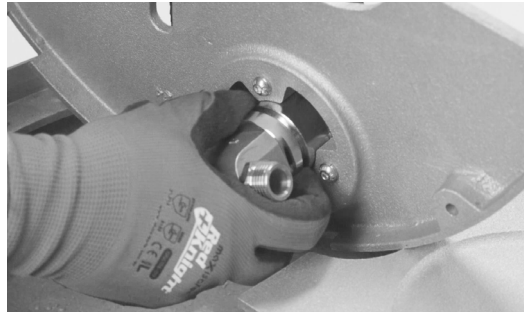


Fig. 16

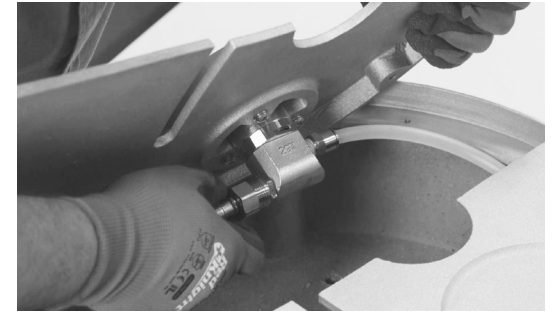


Fig. 17

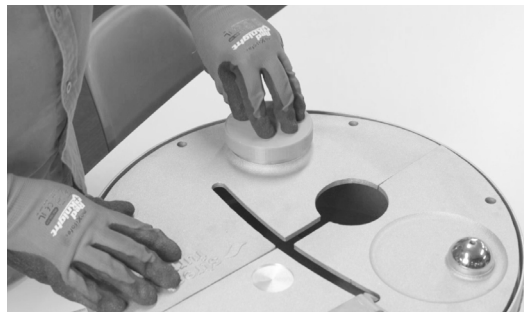


Fig. 18



Fig. 19

assembly and installation instructions

H. HOW TO CHANGE DOG BUBBLER PUSH BUTTON AND VALVE ON ARQUA FOUNTAIN DF4 *(continued)*

14. Screw the valve body back onto the valve **Fig. 14**.
15. Tighten with spanner **Fig. 15**.
16. Tighten the nut **Fig. 16**.
15. Reattach the hose and water supply **Fig. 17**. You may now turn the water supply back on.
15. Place the lid back to onto the sump and test that the button is correctly installed **Fig. 18**.
16. Fix all the screw with Allen Key **Fig. 19**.

care and maintenance

A. HOW TO CARE FOR ARQUA RANGE

Street Furniture recommends a periodic maintenance program for cleaning, touch up and repair if needed. Its frequency is dependent on the usage or proximity to industrial or marine environments. In general, we recommend cleaning once every quarter.

Aluminum

This is a low maintenance material. However, all surfaces should be cleared of dust or dirt using clean water or a mild detergent. Do not use any abrasive detergents, scrub the surface or use a high pressured hose.

Powder Coated Materials

External surfaces should be regularly washed down, especially in corrosive conditions (eg. salt, or chemical deposits).

Any exposed metal resulting from damage to the coating should be repaired quickly to avoid corrosion stains as well as to protect the metal. Please check the powder coating code to make sure it matches the colour of your product.

Touch up of blemishes or deep scratches can be made with 'Professional Touch-Up Paint', applied using an artist's brush or fine spray.

It is available to purchase from:

CR Laurence
Ph: 1800 424 275
www.crlaurence.com.au

Available in pressure pack cans. Most Interpon powdercoat colours have been matched.

Warranty

Street Furniture warrants all products for a period of twelve months from the date of delivery against faults which are the result of poor workmanship or faulty materials.

In severe cases of abuse the valve can be damaged. This intentional damage falls outside of Street Furniture warranty guidelines of normal operation. Replacement parts and valve kits are available from Street Furniture. In the case of a warranty claim being made, the damaged component must ultimately be returned to Street Furniture for evaluation and analysis.

Please call 1800 027 799 (Toll-free Australia wide) for further assistance.

care and maintenance

B. HOW TO CLEAN THE Y-STRAINER FOR TAP MODELS ONLY

Cleaning the Y-Strainer (for Tap models only)

Important:

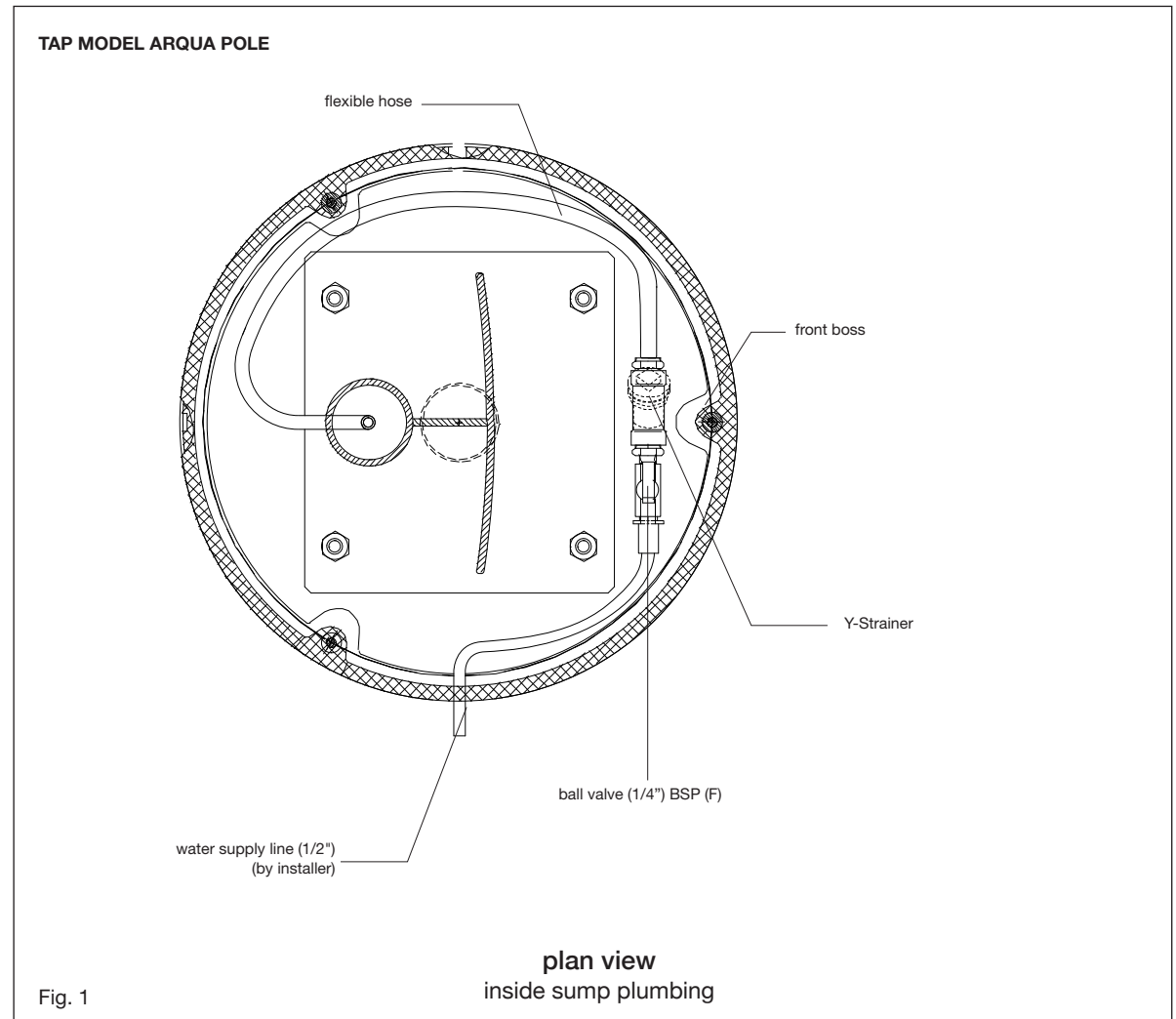
Maintenance on the Arqua Station DF4 + DF7 should only be performed by licensed plumbers or Street Furniture agents. The removal or substitution of any components from the feed line during or after installation will void the manufacturer's warranty.

With normal use and regular maintenance, this product will perform reliably. Cleaning and back-flushing the mesh strainer found in the sump of the Arqua Fountain and in the Arqua Pole should be performed at regular intervals. Street Furniture recommends not longer than quarterly intervals.

Arqua Fountain DF4 (Fig. 1)

1. Remove the sump cover of the Arqua Fountain DF4.
2. Locate the isolating valve and strainer in the sump.
3. Turn the water off at the isolating valve.
4. Unscrew the hexagon head on top of the "Y" strainer.
5. Remove and flush the mesh. Take care to not damage the mesh as this strainer is required to be fully operational to maintain the warranty on the upper push valve.
6. Reassemble the strainer, turn the water back on and check for leaks.
7. Replace the sump plates.

The pit has been designed to capture sediment over time and thereby protect the drainage line, so periodically remove the pit covers and clean the interior.



care and maintenance

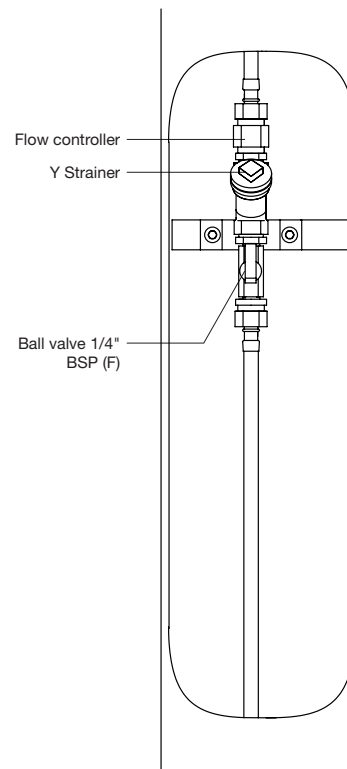
B. HOW TO CLEAN THE Y-STRAINER FOR **TAP MODELS ONLY** (continued)

Arqua Refill Pole DF7 (Fig.1)

1. Remove the hatch of the Arqua Pole DF7.
2. Locate the ball valve and strainer.
3. Turn the water off at the ball valve.
4. Unscrew the hexagon head on the short leg of the Y-strainer.
5. Remove and flush the mesh. Take care to not damage the mesh as this strainer is required to be fully operational to maintain the warranty on the upper push valve.
6. Reassemble the strainer, and apply teflon tape to the threads where necessary.
7. Turn the water back on and check for leaks.
8. Replace the hatch.

The pit has been designed to capture sediment over time and thereby protect the drainage line, so periodically remove the pit covers and clean the interior.

TAP MODEL ARQUA POLE



inside view
with hatch open

Fig. 1

care and maintenance

C. HOW TO REPLACE THE FILTER FOR **FILTERED MODELS ONLY**

If you have the filtered Arqua Station DF4 + DF7, the filter in the Refill Pole DF7 (which is a single use unit) needs to be replaced periodically. The interval depends on the quality of the water supply and the quantity of the water filtered. Normal replacement should be every 56,000 litres (refer also to the filter supplier's literature). Replace more frequently if the water contains a higher than normal particle count.

1. Remove the hatch plate of the Arqua Pole DF7. (**Fig 1**)
2. Turn off the water at the isolating ball valve. The filter is bayonet fitted into the mounting bracket.
3. Rotate the filter approximately 90 degrees and withdraw it.
4. Wipe out the inside of the mounting with a clean cloth to remove any accumulated silt.
5. Position the new filter and rotate into place. Hand-tightening only is required.
6. Turn the water back on and check for leaks. Allow for water through pipework and filters to
7. Flush out "new" taste.
8. Replace the hatch plate.

The pit has been designed to capture sediment over time and thereby protect the drainage line, so periodically remove the pit covers and clean the interior.

TAP MODEL ARQUA POLE

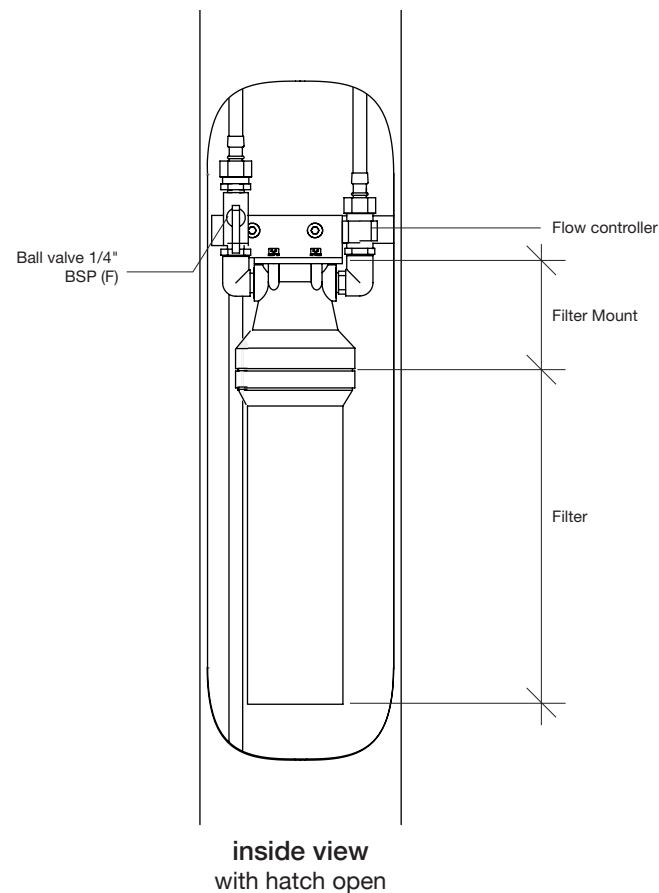


Fig. 1