

café heavy-duty table

T1-HD

Feb 2015

General Description

Durable, all-metal table with slotted cast aluminium top.

Seats four to five people.

Dimensions (mm)

Ø830W x 720H

Specifications

Tick one box per category to specify your project.

TABLE TYPE:
T1

FEET:
Base Plate Reinforced

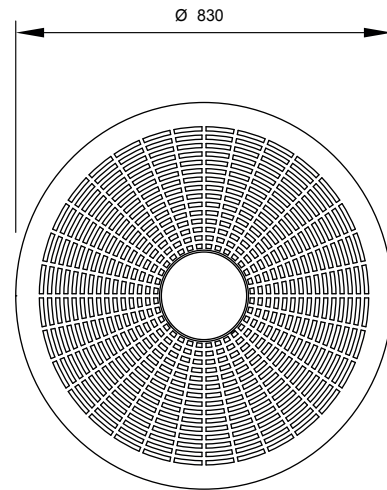
MOUNTING:
Surface

POWDER COAT FINISH:
Please refer to Colour Chart

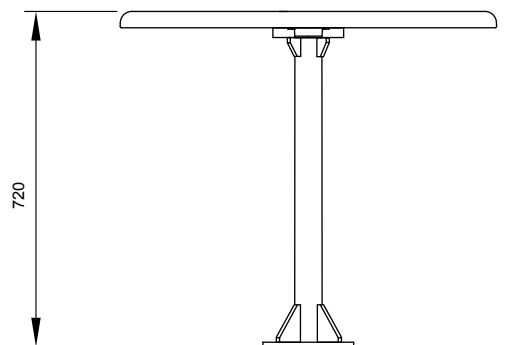
Tailored options are available for all Street Furniture products. Additional fees and lead times may apply.

Related Products

Cafe Stool, Square Table, Rectangular Table and Macchiato Table

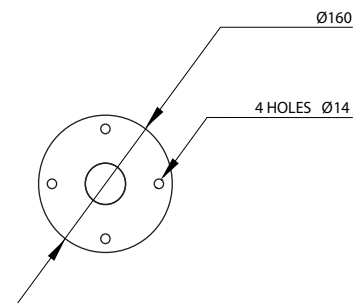


PLAN



Base Plate

Surface



PLAN VIEW
OF BASE PLATE