

Comfortable and timeless, the platform provides both a seating and table solution in one. Ideal for picnic and rest areas.

MCODE:
CMM9

DIMENSIONS:
1750L x 1815W x 390H (mm)
68 7/8" L x 71 7/16" W x 15 3/8" H

Select one box per category to specify your product.

CONFIGURATION:
☐ 1750mm x 1815mm | 68 7/8" x 71 1/2"
☐ Tailored

FRAME:
☐ Cast aluminium powder coated
(see colour chart)

LEG AND MOUNTING:
☐ 04 Pedestal
☐ Surface fixed
☐ Subsurface fixed
☐ 05 Post
☐ Surface fixed with cast base
☐ Subsurface fixed with base plate
☐ Core drilled (300mm below ground)
☐ 11 Plinth (fixed on top of wall)

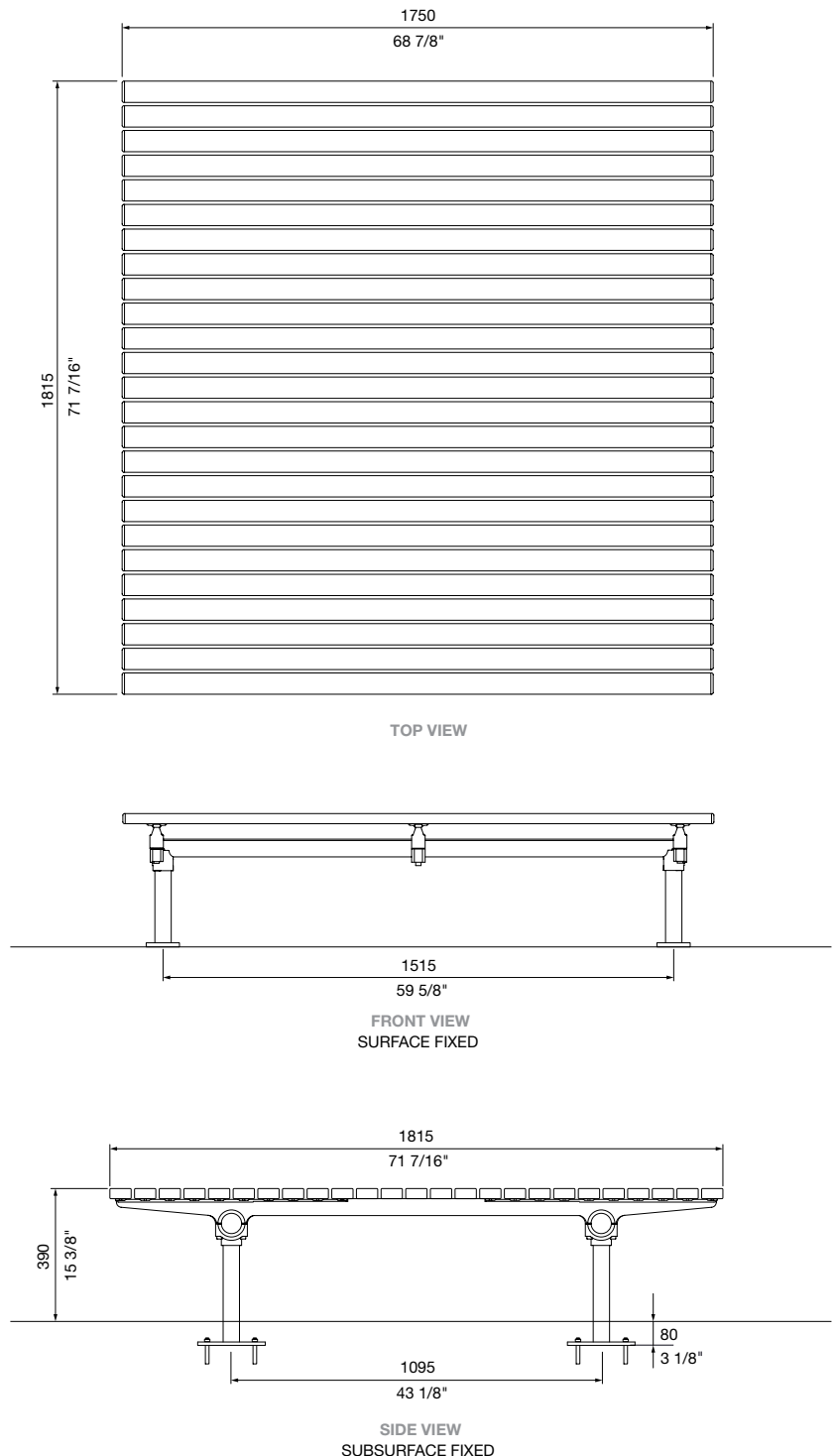
BATTEN:
Street Furniture Australia uses sustainable timber from certified managed forests. Timber requires oiling every three months. For a timber look with low maintenance, choose aluminium woodgrain.

☐ Eco-certified hardwood oiled
☐ Aluminium anodised
☐ Aluminium powder coated (see colour chart)
☐ Aluminium woodgrain (see colour chart)
☐ Tailored

BATTEN END CAP:
Solid powder colour applies to aluminium battens only.

☐ Match batten colour
☐ Match frame colour
☐ Tailored (see colour chart)

Some options incur additional fees and lead time.



Need more information?

For a brochure, image gallery, CAD downloads, installation and maintenance guides, go to:

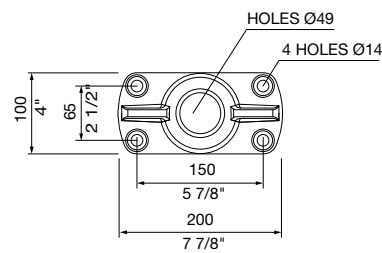
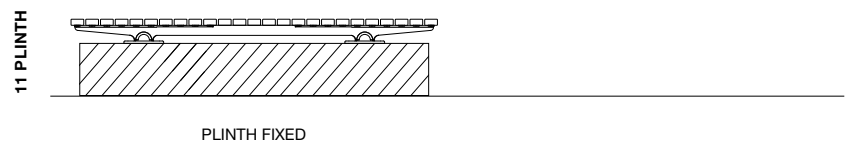
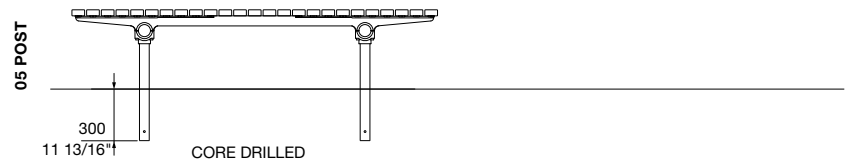
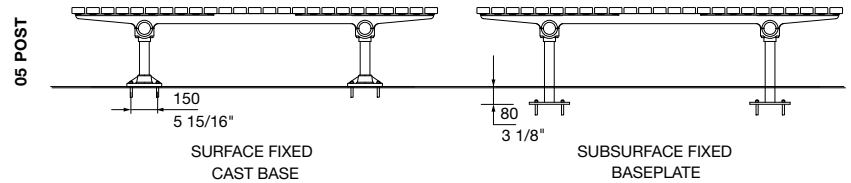
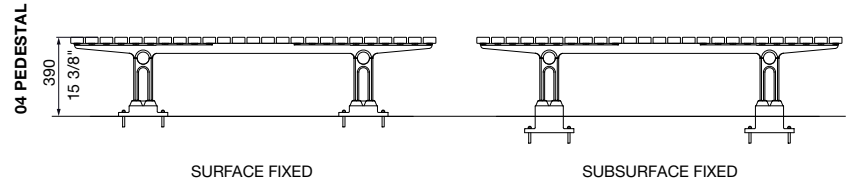
streetfurniture.com/au/product/mall-platform/

Quick links:

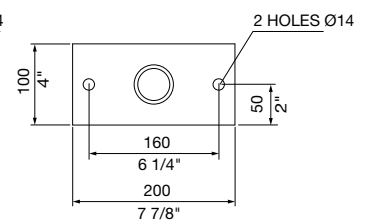
streetfurniture.com/au/colour-chart/

streetfurniture.com/au/warranty/

streetfurniture.com/au/parts-promise/



CAST BASE DETAIL
SURFACE FIXED



BASEPLATE DETAIL
SUBSURFACE FIXED